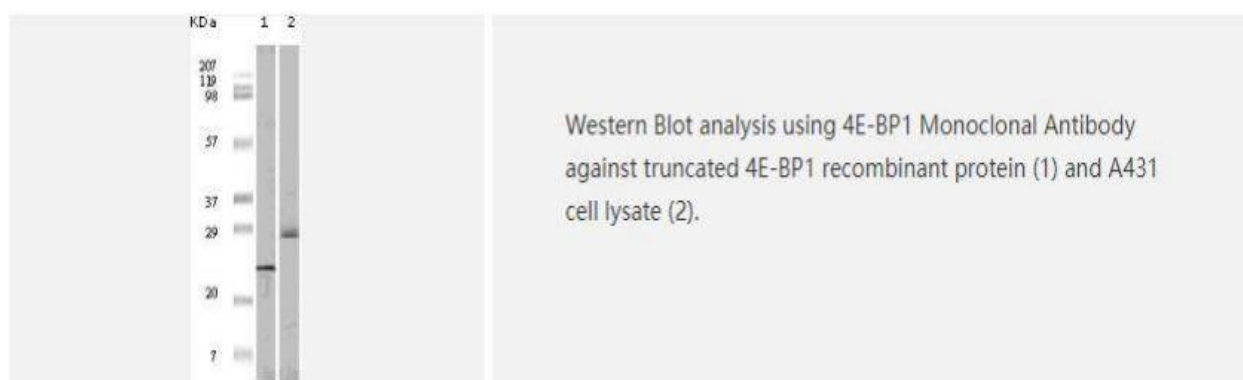
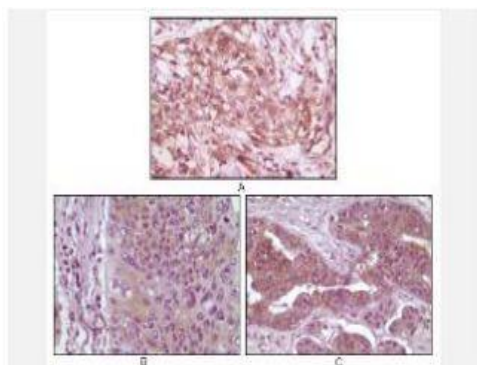


4E-BP1 Monoclonal Antibody

Catalog No.	IMB0178
Reactivity	Human
Applications	WB; IHC-p; ELISA
Gene Name	EIF4EBP1
Protein Name	Eukaryotic translation initiation factor 4E-binding protein 1
Human Gene Id	1978
Swiss-Prot	Q13541
Formulation	Ascitic fluid containing 0.03% sodium azide, 0.5% BSA, 50% glycerol.
Source	Monoclonal, Mouse
Dilution	WB: 1:500-1:2000 IHC: 1:200-1:1000 ELISA: 1:10000
Purification	Affinity purification
Concentration	-
Storage & Stability	-20°C/1 year
Background	This gene encodes one member of a family of translation repressor proteins. The protein directly interacts with eukaryotic translation initiation factor 4E (eIF4E), which is a limiting component of the multisubunit complex that recruits 40S ribosomal subunits to the 5' end of mRNAs. Interaction of this protein with eIF4E inhibits complex assembly and represses translation. This protein is phosphorylated in response to various signals including UV irradiation and insulin signaling, resulting in its dissociation from eIF4E and activation of mRNA translation. [provided by RefSeq, Jul 2008],
Subcellular Location.	nucleoplasm, cytoplasm, cytosol, protein complex.
Biological MW	-

Products Images:





Immunohistochemistry analysis of paraffin-embedded human pancreas carcinoma (A), esophagus carcinoma tissue (B) and ovary tumor tissue (C), showing cytoplasmic and membrane localization with DAB staining using 4E-BP1 Monoclonal Antibody.