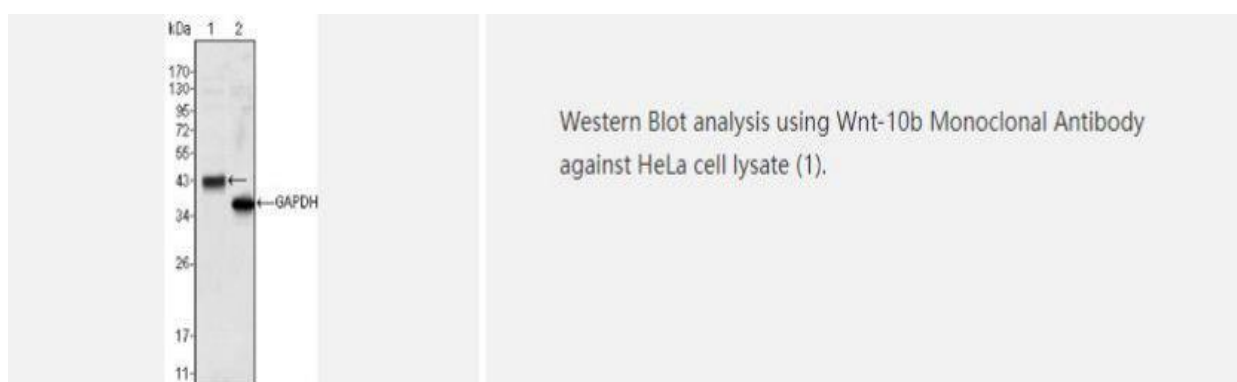
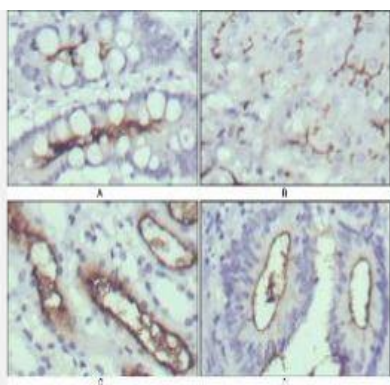


Wnt-10b Monoclonal Antibody

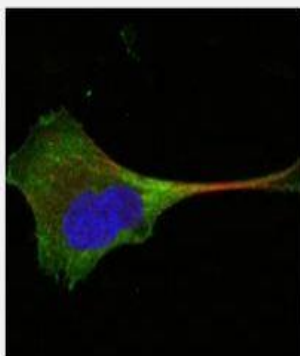
Catalog No.	IMB0175
Reactivity	Human
Applications	WB; IHC-p; IF/ICC; ELISA
Gene Name	WNT10B
Protein Name	Protein Wnt-10b
Human Gene Id	7480
Swiss-Prot	O00744
Formulation	Ascitic fluid containing 0.03% sodium azide, 0.5% BSA, 50% glycerol.
Source	Monoclonal, Mouse
Dilution	WB: 1:500-1:2000 IHC: 1:200-1:1000 IF: 1:200-1:1000 ELISA: 1:10000
Purification	Affinity purification
Concentration	-
Storage & Stability	-20°C/1 year
Background	The WNT gene family consists of structurally related genes which encode secreted signaling proteins. These proteins have been implicated in oncogenesis and in several developmental processes, including regulation of cell fate and patterning during embryogenesis. This gene is a member of the WNT gene family. It may be involved in breast cancer, and its protein signaling is likely a molecular switch that governs adipogenesis. This protein is 96% identical to the mouse Wnt10b protein at the amino acid level. This gene is clustered with another family member, WNT1, in the chromosome 12q13 region. [provided by RefSeq, Jul 2008],
Subcellular Location.	Secreted, extracellular space, extracellular matrix. Secreted.
Biological MW	-

Products Images:





Immunohistochemistry analysis of paraffin-embedded human normal stomach (A), normal liver (B), normal kidney (C) and rectum cancer tissues (D) with DAB staining using Wnt-10b Monoclonal Antibody.



Confocal immunofluorescence analysis of PANC-1 cells using Wnt-10b Monoclonal Antibody (green). Red: Actin filaments have been labeled with Alexa Fluor-555 phalloidin. Blue: DRAQ5 fluorescent DNA dye.