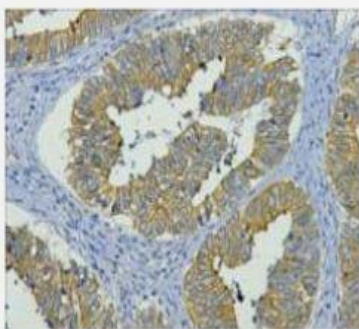


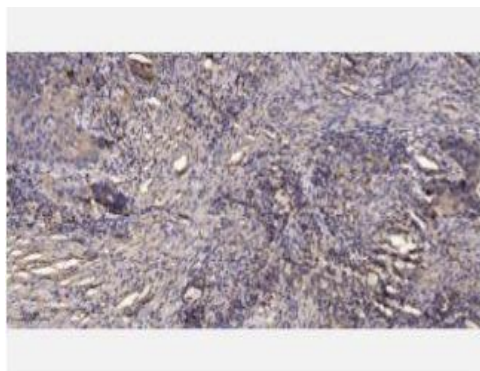
CK19 Monoclonal Antibody(11F5)

Catalog No.	IMB0161
Reactivity	Human;Mouse;Rat
Applications	IHC-p
Gene Name	KRT19
Protein Name	Keratin type I cytoskeletal 19
Human Gene Id	3880
Swiss-Prot	P08727
Formulation	PBS, pH 7.4, containing 0.5%BSA, 0.02% sodium azide as Preservative and 50% Glycerol.
Source	Monoclonal, Mouse
Dilution	IHC: 1:200
Purification	The antibody was affinity-purified from mouse ascites by affinity-chromatography using specific immunogen.
Concentration	-
Storage&Stability	-20°C/1 year
Background	The protein encoded by this gene is a member of the keratin family. The keratins are intermediate filament proteins responsible for the structural integrity of epithelial cells and are subdivided into cytokeratins and hair keratins. The type I cytokeratins consist of acidic proteins which are arranged in pairs of heterotypic keratin chains. Unlike its related family members, this smallest known acidic cytokeratin is not paired with a basic cytokeratin in epithelial cells. It is specifically expressed in the periderm, the transiently superficial layer that envelopes the developing epidermis. The type I cytokeratins are clustered in a region of chromosome 17q12-q21.
Subcellular Location.	intermediate filament, plasma membrane, dystrophin-associated glycoprotein complex, Z disc, sarcolemma, costamere, extracellular exosome, cell periphery, terminal web.
BiowMW	44092/59511/53511

Products Images:



IHC staining of human colon cancer tissue, diluted at 1:200.



Immunohistochemical analysis of paraffin-embedded human Squamous cell carcinoma of lung. 1, Antibody was diluted at 1:200(4° overnight). 2, Tris-EDTA,pH9.0 was used for antigen retrieval. 3,Secondary antibody was diluted at 1:200(room temperature, 45min).