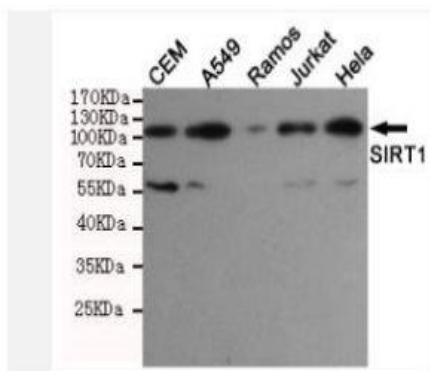


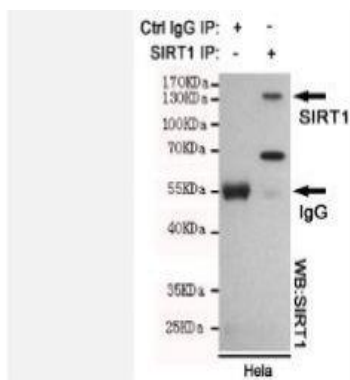
SIRT1 mouse mAb

Catalog No.	IMB0137
Reactivity	Human
Applications	WB; IP
Gene Name	sirt1
Protein Name	-
Human Gene Id	23411
Swiss-Prot	Q96EB6
Formulation	Liquid in PBS containing 50% glycerol, 0.5% BSA and 0.02% sodium azide.
Source	Monoclonal, Mouse
Dilution	WB: 1:1000
Purification	The antibody was affinity-purified from mouse ascites by affinity-chromatography using epitope-specific immunogen.
Concentration	1 mg/ml
Storage&Stability	-20°C/1 year
Background	This gene encodes a member of the sirtuin family of proteins, homologs to the yeast Sir2 protein. Members of the sirtuin family are characterized by a sirtuin core domain and grouped into four classes. The functions of human sirtuins have not yet been determined; however, yeast sirtuin proteins are known to regulate epigenetic gene silencing and suppress recombination of rDNA. Studies suggest that the human sirtuins may function as intracellular regulatory proteins with mono-ADP-ribosyltransferase activity. The protein encoded by this gene is included in class I of the sirtuin family. Alternative splicing results in multiple transcript variants. [provided by RefSeq, Dec 2008],
Subcellular Location.	Nucleus, PML body. Cytoplasm. Nucleus. Recruited to the nuclear bodies via its interaction with PML (PubMed:12006491). Colocalized with APEX1 in the nucleus (PubMed:19934257). May be found in nucleolus, nuclear euchromatin, heterochromatin and inner membrane (PubMed:15469825). Shuttles between nucleus and cytoplasm (By similarity). Colocalizes in the nucleus with XBP1 isoform 2 (PubMed:20955178). [SirtT1 75 kDa fragment]: Cytoplasm . Mitochondrion.
BiowMW	-

Products Images:



Western blot detection of SIRT1 in HeLa, Jurkat, Ramos, A549 and CEM cell lysates using SIRT1 mouse mAb (1:1000 diluted). Predicted band size: 120KDa. Observed band size: 120KDa.



Immunoprecipitation analysis of HeLa cell lysates using SIRT1 mouse mAb.