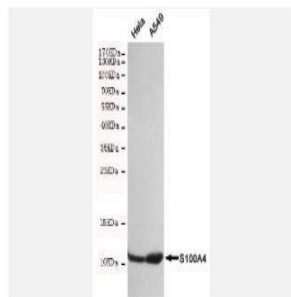


S100A4 mouse mAb

Catalog No.	IMB0136
Reactivity	Human
Applications	WB
Gene Name	S100A4
Protein Name	-
Human Gene Id	6275
Swiss-Prot	P26447
Formulation	Liquid in PBS containing 50% glycerol, 0.5% BSA and 0.02% sodium azide.
Source	Monoclonal, Mouse
Dilution	WB: 1:500
Purification	The antibody was affinity-purified from mouse ascites by affinity-chromatography using epitope-specific immunogen.
Concentration	1 mg/ml
Storage&Stability	-20°C/1 year
Background	The protein encoded by this gene is a member of the S100 family of proteins containing 2 EF-hand calcium-binding motifs. S100 proteins are localized in the cytoplasm and/or nucleus of a wide range of cells, and involved in the regulation of a number of cellular processes such as cell cycle progression and differentiation. S100 genes include at least 13 members which are located as a cluster on chromosome 1q21. This protein may function in motility, invasion, and tubulin polymerization. Chromosomal rearrangements and altered expression of this gene have been implicated in tumor metastasis. Multiple alternatively spliced variants, encoding the same protein, have been identified. [provided by RefSeq, Jul 2008],
Subcellular Location.	Secreted. Nucleus. Cytoplasm.
BiowMW	-

Products Images:



Western blot detection of S100A4 in HeLa and A549 cell lysates using S100A4 mouse mAb(dilution 1:500).Predicted band size:12kDa.Observed band size:12kDa.