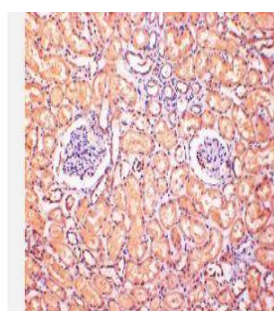


## ERK5 Mouse mAb(4D6)

<b>Catalog No.</b>	IMB0120
<b>Reactivity</b>	Human; Mouse;Rat
<b>Applications</b>	IHC
<b>Gene Name</b>	MAPK7
<b>Protein Name</b>	ERK5
<b>Human Gene Id</b>	-
<b>Swiss-Prot</b>	Q13164
<b>Formulation</b>	Liquid in PBS containing 50% glycerol, 0.5% BSA and 0.62% sodium azide.
<b>Source</b>	Monoclonal, Mouse
<b>Dilution</b>	IHC: 1:50-200
<b>Purification</b>	The antibody was affinity-purified from mouse ascites by affinity-chromatography using specific immunogen.
<b>Concentration</b>	1 mg/ml
<b>Storage&amp;Stability</b>	-20°C/1 year
<b>Background</b>	ERK5, Mitogen-activated protein kinase 7 also known as MAP kinase 7 is an enzyme that in humans is encoded by the MAPK7 gene. MAPK7 is a member of the MAP kinase family. MAP kinases act as an integration point for multiple biochemical signals, and are involved in a wide variety of cellular processes such as proliferation, differentiation, transcription regulation and development.
<b>Subcellular Location.</b>	Cytoplasm. Nucleus. Nucleus, PML body. Translocates to the nucleus upon activation.
<b>BiowMW</b>	-

### Products Images:



Immunohistochemical analysis of paraffin-embedded Human Kidney Tissue using ERK5 Mouse Monoclonal antibody diluted at 1:200.