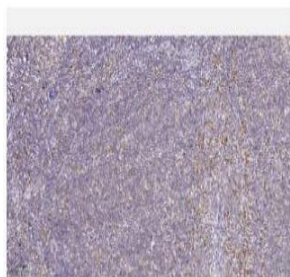


## HMG-I/HMG-Y Polyclonal Antibody

<b>Catalog No.</b>	IMB0111
<b>Reactivity</b>	Human; Mouse; Rat
<b>Applications</b>	IHC; ELISA
<b>Gene Name</b>	HMGA1 HMGIY
<b>Protein Name</b>	HMG-I/HMG-Y
<b>Human Gene Id</b>	3159
<b>Swiss-Prot</b>	P17096
<b>Formulation</b>	Liquid in PBS containing 50% glycerol, 0.5% BSA and 0.02% sodium azide.
<b>Source</b>	Polyclonal, Rabbit
<b>Dilution</b>	IHC-p: 1:50-200 ELISA(peptide):: 1:5000-20000
<b>Purification</b>	The antibody was affinity-purified from mouse ascites by affinity-chromatography using specific immunogen.
<b>Concentration</b>	1 mg/ml
<b>Storage&amp;Stability</b>	-20°C/1 year
<b>Background</b>	This gene encodes a chromatin-associated protein involved in the regulation of gene transcription, integration of retroviruses into chromosomes, and the metastatic progression of cancer cells. The encoded protein preferentially binds to the minor groove of AT-rich regions in double-stranded DNA. Multiple transcript variants encoding different isoforms have been found for this gene. Pseudogenes of this gene have been identified on multiple chromosomes. [provided by RefSeq, Jan 2016],
<b>Subcellular Location.</b>	Nucleus. Chromosome.
<b>BiowMW</b>	-

### Products Images:



Immunohistochemical analysis of paraffin-embedded human tonsil. 1, Tris-EDTA, pH9.0 was used for antigen retrieval. 2 Antibody was diluted at 1:200(4° overnight.3,Secondary antibody was diluted at 1:200(room temperature, 45min).