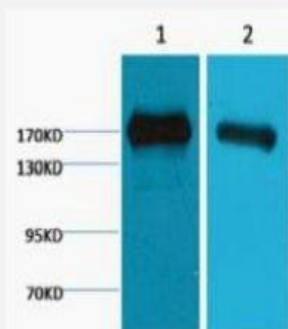


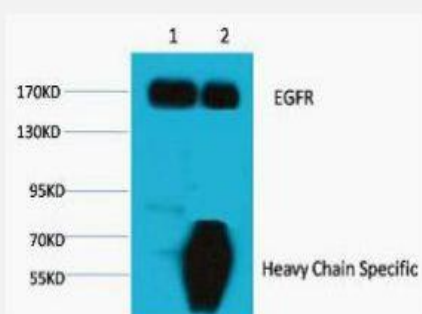
EGFR Monoclonal Antibody(M6)

Catalog No.	IMB0108
Reactivity	Human
Applications	WB
Gene Name	EGFR
Protein Name	Epidermal growth factor receptor
Human Gene Id	1956
Swiss-Prot	P00533
Formulation	PBS, pH 7.4, containing 0.5%BSA, 0.02% sodium azide as Preservative and 50% Glycerol.
Source	Monoclonal, Mouse
Dilution	WB: 1:1000-3000
Purification	The antibody was affinity-purified from mouse ascites by affinity-chromatography using specific immunogen.
Concentration	-
Storage&Stability	-20°C/1 year
Background	The protein encoded by this gene is a transmembrane glycoprotein that is a member of the protein kinase superfamily. This protein is a receptor for members of the epidermal growth factor family. EGFR is a cell surface protein that binds to epidermal growth factor. Binding of the protein to a ligand induces receptor dimerization and tyrosine autophosphorylation and leads to cell proliferation. Mutations in this gene are associated with lung cancer. [provided by RefSeq, Jun 2016],
Subcellular Location.	Cell membrane ; Single-pass type I membrane protein . Endoplasmic reticulum membrane ; Single-pass type I membrane protein. Golgi apparatus membrane; Single-pass type I membrane protein. Nucleus membrane; Single-pass type I membrane protein. Endosome . Endosome membrane. Nucleus . In response to EGF, translocated from the cell membrane to the nucleus via Golgi and ER (PubMed:20674546, PubMed:17909029). Endocytosed upon activation by ligand (PubMed:2790960, PubMed:17182860, PubMed:27153536, PubMed:17909029). Colocalized with GPER1 in the nucleus of estrogen agonist-induced cancer-associated fibroblasts (CAF) (PubMed:20551055). .; [Isoform 2]: Secreted.
BiowMW	134277

Products Images:



Western blot analysis of 1) A431, 2) HeLa, diluted at 1:2000.



1、Input: HeLa Cell Lysate 2、IP product: IP dilute 1:200
Western blot analysis: primary antibody : 1:1,000 Secondary
antibody: Goat anti-Mouse IgG, Heavy Chain Specific(S003),
1:5,000