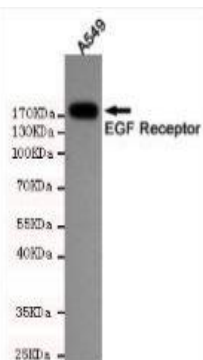


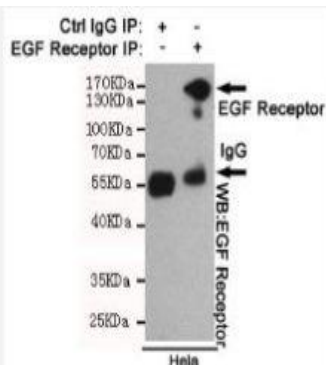
## EGF Receptor mouse mAb

<b>Catalog No.</b>	IMB0106
<b>Reactivity</b>	Human
<b>Applications</b>	WB; IP
<b>Gene Name</b>	egfr
<b>Protein Name</b>	-
<b>Human Gene Id</b>	1956
<b>Swiss-Prot</b>	P00533
<b>Formulation</b>	Liquid in PBS containing 50% glycerol, 0.5% BSA and 0.02% sodium azide.
<b>Source</b>	Monoclonal, Mouse
<b>Dilution</b>	WB: 1:2000
<b>Purification</b>	The antibody was affinity-purified from mouse ascites by affinity-chromatography using epitope-specific immunogen.
<b>Concentration</b>	1 mg/ml
<b>Storage&amp;Stability</b>	-20°C/1 year
<b>Background</b>	The protein encoded by this gene is a transmembrane glycoprotein that is a member of the protein kinase superfamily. This protein is a receptor for members of the epidermal growth factor family. EGFR is a cell surface protein that binds to epidermal growth factor. Binding of the protein to a ligand induces receptor dimerization and tyrosine autophosphorylation and leads to cell proliferation. Mutations in this gene are associated with lung cancer. [provided by RefSeq, Jun 2016],
<b>Subcellular Location.</b>	Cell membrane ; Single-pass type I membrane protein . Endoplasmic reticulum membrane ; Single-pass type I membrane protein. Golgi apparatus membrane; Single-pass type I membrane protein. Nucleus membrane; Single-pass type I membrane protein. Endosome . Endosome membrane. Nucleus . In response to EGF, translocated from the cell membrane to the nucleus via Golgi and ER (PubMed:20674546, PubMed:17909029). Endocytosed upon activation by ligand (PubMed:2790960, PubMed:17182860, PubMed:27153536, PubMed:17909029). Colocalized with GPER1 in the nucleus of estrogen agonist-induced cancer-associated fibroblasts (CAF) (PubMed:20551055). .; [Isoform 2]: Secreted.
<b>BiowMW</b>	-

**Products Images:**



Western blot detection of EGFR in A549 cell lysates using EGFR mouse mAb(dilution 1:2000).Predicted band size:134 Kda.Observed band size:175KDa.



Immunoprecipitation analysis of HeLa cell lysates using EGFR mouse mAb.