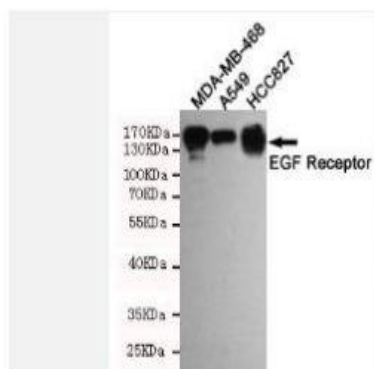


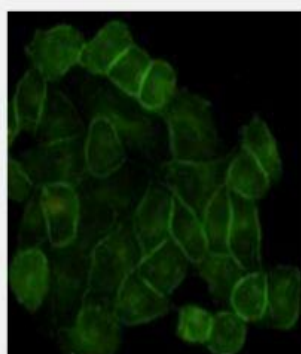
EGF Receptor mouse mAb

Catalog No.	IMB0105
Reactivity	Human
Applications	WB; ICC; IHC; IP
Gene Name	egfr
Protein Name	-
Human Gene Id	1956
Swiss-Prot	P00533
Formulation	Liquid in PBS containing 50% glycerol, 0.5% BSA and 0.02% sodium azide.
Source	Monoclonal, Mouse
Dilution	WB: 1:1000 ICC: 1:200 IHC: 1:800
Purification	The antibody was affinity-purified from mouse ascites by affinity-chromatography using epitope-specific immunogen.
Concentration	1 mg/ml
Storage&Stability	-20°C/1 year
Background	The protein encoded by this gene is a transmembrane glycoprotein that is a member of the protein kinase superfamily. This protein is a receptor for members of the epidermal growth factor family. EGFR is a cell surface protein that binds to epidermal growth factor. Binding of the protein to a ligand induces receptor dimerization and tyrosine autophosphorylation and leads to cell proliferation. Mutations in this gene are associated with lung cancer. [provided by RefSeq, Jun 2016],
Subcellular Location.	Cell membrane ; Single-pass type I membrane protein . Endoplasmic reticulum membrane ; Single-pass type I membrane protein. Golgi apparatus membrane; Single-pass type I membrane protein. Nucleus membrane; Single-pass type I membrane protein. Endosome . Endosome membrane. Nucleus . In response to EGF, translocated from the cell membrane to the nucleus via Golgi and ER (PubMed:20674546, PubMed:17909029). Endocytosed upon activation by ligand (PubMed:2790960, PubMed:17182860, PubMed:27153536, PubMed:17909029). Colocalized with GPER1 in the nucleus of estrogen agonist-induced cancer-associated fibroblasts (CAF) (PubMed:20551055). .; [Isoform 2]: Secreted.
BiowMW	-

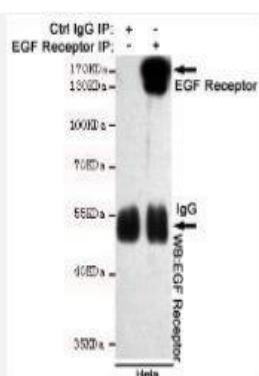
Products Images:



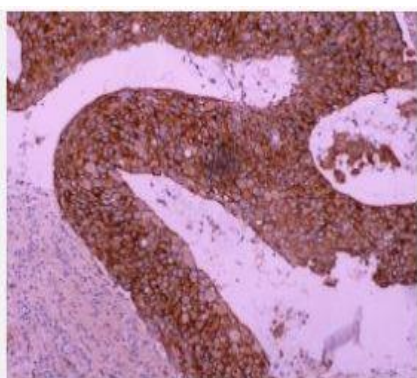
Western blot detection of EGFR in HCC827, A549 and MDA-MB-468 cell lysates using EGFR mouse mAb (dilution 1:1000). Predicted band size: 134 Kda. Observed band size: 175KDa.



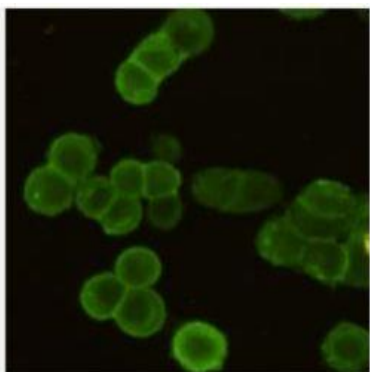
Immunocytochemistry staining of HeLa cells using EGFR mouse mAb (dilution 1:200).



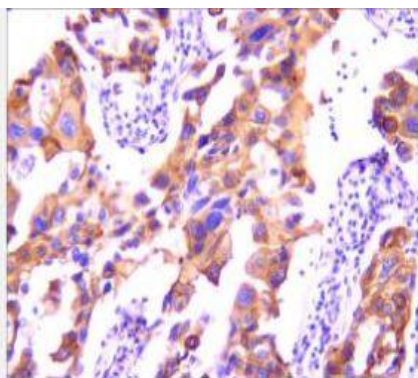
Immunoprecipitation analysis of HeLa cell lysates using EGFR mouse mAb.



Immunohistochemical analysis of paraffin-embedded Lung carcinoma using EGF Receptor (3F12) mouse mAb (1/800 dilution) at the Roche Benchmark XT system.



Immunocytochemistry staining of MDA-MB-468 cells fixed with 4% Paraformaldehyde and using EGFR mouse mAb (dilution 1:200).



Immunohistochemical analysis of paraffin-embedded Colorectal cancer using EGF Receptor (3F12) mouse mAb (1/800 dilution). Antigen retrieval was performed by pressure cooking in citrate buffer (pH 6.0).