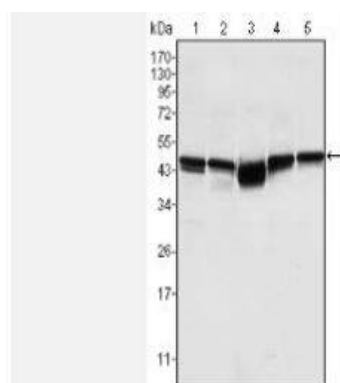


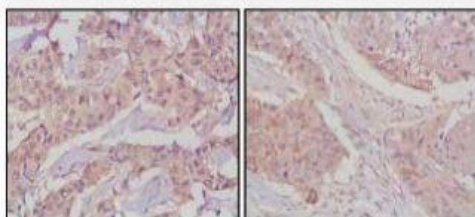
GSK3 β Monoclonal Antibody

Catalog No.	IMB0102
Reactivity	Human;Mouse;Rat;Monkey
Applications	WB; IHC-p; IF/ICC; FCM; ELISA
Gene Name	GSK3B
Protein Name	Glycogen synthase kinase-3 beta
Human Gene Id	2942
Swiss-Prot	P49841
Formulation	Ascitic fluid containing 0.03% sodium azide,0.5% BSA, 50%glycerol.
Source	Monoclonal, Mouse
Dilution	WB: 1:500-1:2000 IHC: 1:200-1:1000 IF: 1:200-1:1000 FCM: 1:200-1:400 ELISA: 1:10000
Purification	Affinity purification
Concentration	-
Storage&Stability	-20°C/1 year
Background	The protein encoded by this gene is a serine-threonine kinase, belonging to the glycogen synthase kinase subfamily. It is involved in energy metabolism, neuronal cell development, and body pattern formation. Polymorphisms in this gene have been implicated in modifying risk of Parkinson disease, and studies in mice show that overexpression of this gene may be relevant to the pathogenesis of Alzheimer disease. Alternatively spliced transcript variants encoding different isoforms have been found for this gene.[provided by RefSeq, Sep 2009],
Subcellular Location.	Cytoplasm . Nucleus . Cell membrane . The phosphorylated form shows localization to cytoplasm and cell membrane (PubMed:20937854). The MEMO1-RHOA-DIAPH1 signaling pathway controls localization of the phosphorylated form to the cell membrane (PubMed:20937854). .
BiowMW	-

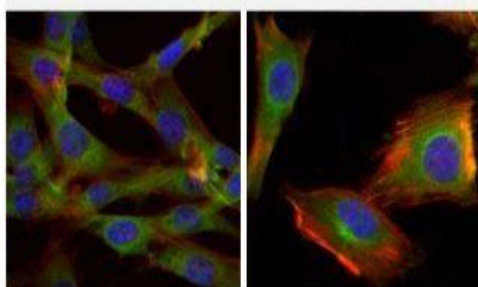
Products Images:



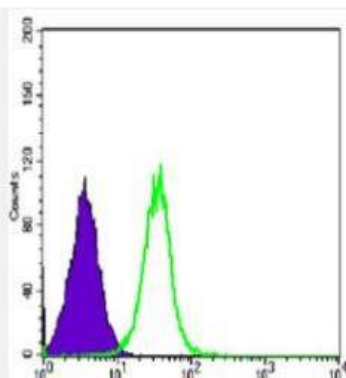
Western Blot analysis using GSK3 β Monoclonal Antibody against A549 (1), K562 (2), PC-12 (3), NIH/3T3 (4), and HEK293 (5) cell lysate.



Immunohistochemistry analysis of paraffin-embedded human lung cancer (left) and breast cancer tissues (right) with DAB staining using GSK3 β Monoclonal Antibody.



Immunofluorescence analysis of NIH/3T3 (left) and U251 (right) cells using GSK3 β Monoclonal Antibody (green). Blue: DRAQ5 fluorescent DNA dye. Red: Actin filaments have been labeled with Alexa Fluor-555 phalloidin.



Flow cytometric analysis of Hela cells using GSK3 β Monoclonal Antibody (green) and negative control (purple).