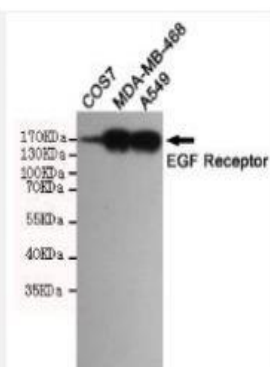


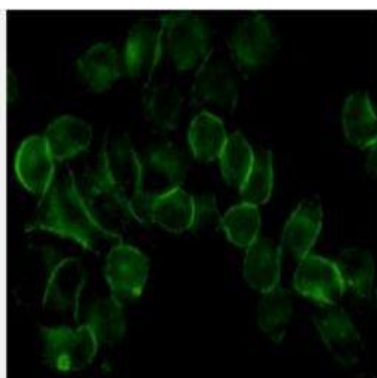
EGF Receptor mouse mAb

Catalog No.	IMB0096
Reactivity	Human;Monkey
Applications	WB; ICC; IP
Gene Name	egfr
Protein Name	-
Human Gene Id	1956
Swiss-Prot	P00533
Formulation	Liquid in PBS containing 50% glycerol, 0.5% BSA and 0.02% sodium azide.
Source	Monoclonal, Mouse
Dilution	WB: 1:1000 ICC: 1:200
Purification	The antibody was affinity-purified from mouse ascites by affinity-chromatography using epitope-specific immunogen.
Concentration	1 mg/ml
Storage&Stability	-20°C/1 year
Background	The protein encoded by this gene is a transmembrane glycoprotein that is a member of the protein kinase superfamily. This protein is a receptor for members of the epidermal growth factor family. EGFR is a cell surface protein that binds to epidermal growth factor. Binding of the protein to a ligand induces receptor dimerization and tyrosine autophosphorylation and leads to cell proliferation. Mutations in this gene are associated with lung cancer. [provided by RefSeq, Jun 2016],
Subcellular Location.	Cell membrane; Single-pass type I membrane protein. Endoplasmic reticulum membrane; Single-pass type I membrane protein. Golgi apparatus membrane; Single-pass type I membrane protein. Nucleus membrane; Single-pass type I membrane protein. Endosome. Endosome membrane. Nucleus. In response to EGF, translocated from the cell membrane to the nucleus via Golgi and ER. Endocytosed upon activation by ligand. Colocalized with GPER1 in the nucleus of estrogen agonist-induced cancer-associated fibroblasts (CAF). [Isoform 2]: Secreted.
BiowMW	-

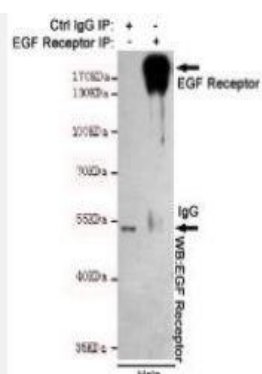
Products Images:



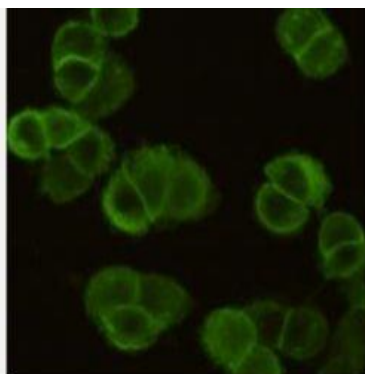
Western blot detection of EGFR in A549,MDA-MB-468 and COS7 cell lysates using EGFR mouse mAb(dilution 1:1000).Predicted band size:134 Kda.Observed band size:175KDa.



Immunocytochemistry staining of HeLa cells using EGFR mouse mAb (dilution 1:200).



Immunoprecipitation analysis of HeLa cell lysates using EGFR mouse mAb.



Immunocytochemistry staining of MDA-MB-468 cells fixed with 4% Paraformaldehyde and using EGFR mouse mAb (dilution 1:200).