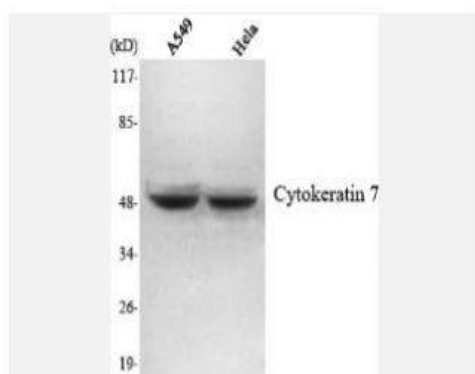


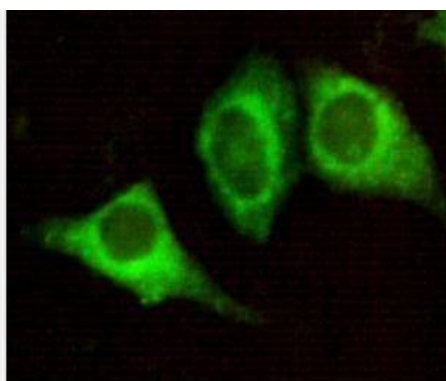
Cytokeratin 7 Monoclonal Antibody

Catalog No.	IMB0095
Reactivity	Human;Mouse;Rat;Bovine
Applications	WB; IF/ICC
Gene Name	KRT7
Protein Name	Keratin type II cytoskeletal 7
Human Gene Id	3855
Swiss-Prot	P08729
Formulation	Purified mouse monoclonal in buffer containing 0.1M Tris-Glycine (pH 7.4, 150 mM NaCl) with 0.2% sodium azide, 50% glycerol.
Source	Monoclonal, Mouse
Dilution	WB: 1:1000-1:2000 IF: 1:100-1:500
Purification	Affinity purification
Concentration	1 mg/ml
Storage&Stability	-20°C/1 year
Background	The protein encoded by this gene is a member of the keratin gene family. The type II cytokeratins consist of basic or neutral proteins which are arranged in pairs of heterotypic keratin chains coexpressed during differentiation of simple and stratified epithelial tissues. This type II cytokeratin is specifically expressed in the simple epithelia lining the cavities of the internal organs and in the gland ducts and blood vessels. The genes encoding the type II cytokeratins are clustered in a region of chromosome 12q12-q13. Alternative splicing may result in several transcript variants; however, not all variants have been fully described. [provided by RefSeq, Jul 2008],
Subcellular Location.	Cytoplasm.
BiowMW	-

Products Images:



Western Blot analysis using Cytokeratin 7 Monoclonal Antibody against A459, HeLa cell lysate.



Immunofluorescence analysis of HeLa cells using Cytokeratin 7 Monoclonal Antibody.