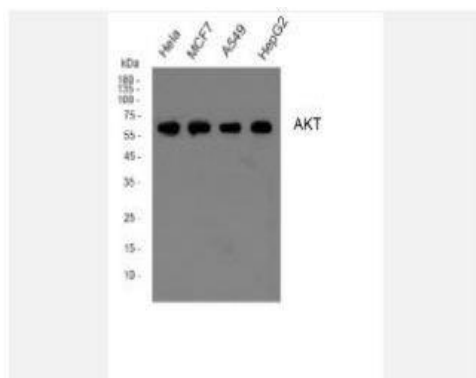


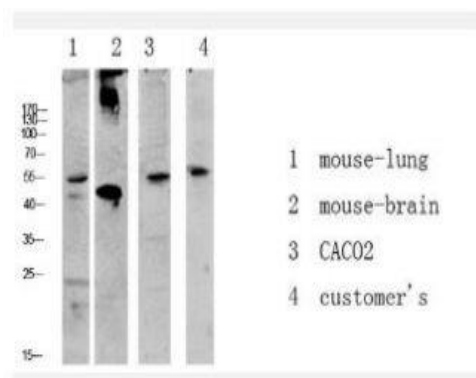
## Akt antibody

<b>Catalog No.</b>	IMB0081
<b>Reactivity</b>	Human;Mouse;Rat
<b>Applications</b>	WB; ELISA
<b>Gene Name</b>	AKT1 PKB RAC
<b>Protein Name</b>	RAC-alpha serine/threonine-protein kinase (EC 2.7.11.1) (Protein kinase B) (PKB) (Protein kinase B alpha) (PKB alpha) (Proto-oncogene c-Akt) (RAC-PK-alpha)
<b>Human Gene Id</b>	207
<b>Swiss-Prot</b>	P31749
<b>Formulation</b>	Liquid in PBS containing 50% glycerol, 0.5% BSA and 0.02% sodium azide.
<b>Source</b>	Polyclonal, Rabbit
<b>Dilution</b>	WB: 1:500-2000 ELISA 1:10000-20000
<b>Purification</b>	The antibody was affinity-purified from rabbit antiserum by affinity-chromatography using epitope-specific immunogen.
<b>Concentration</b>	1 mg/ml
<b>Storage&amp;Stability</b>	-20°C/1 year
<b>Background</b>	The serine-threonine protein kinase encoded by the AKT1 gene is catalytically inactive in serum-starved primary and immortalized fibroblasts. AKT1 and the related AKT2 are activated by platelet-derived growth factor. The activation is rapid and specific, and it is abrogated by mutations in the pleckstrin homology domain of AKT1. It was shown that the activation occurs through phosphatidylinositol 3-kinase. In the developing nervous system AKT is a critical mediator of growth factor-induced neuronal survival. Survival factors can suppress apoptosis in a transcription-independent manner by activating the serine/threonine kinase AKT1, which then phosphorylates and inactivates components of the apoptotic machinery. Mutations in this gene have been associated with the Proteus syndrome. Multiple alternatively spliced transcript variants have been found for this gene. [provided by RefSeq, Jul 2011]
<b>Subcellular Location.</b>	Cytoplasm. Nucleus. Cell membrane. Nucleus after activation by integrin-linked protein kinase 1 (ILK1). Nuclear translocation is enhanced by interaction with TCL1A. Phosphorylation on Tyr-176 by TNK2 results in its localization to the cell membrane where it is targeted for further phosphorylations on Thr-308 and Ser-473 leading to its activation and the activated form translocates to the nucleus. Colocalizes with WDFY2 in intracellular vesicles.
<b>BiowMW</b>	-

**Products Images:**



Western blot analysis of Akt Polyclonal Antibody, using HeLa, HepG2, MCF7, A549 cell, 4° over night, secondary antibody (cat: RS0002) was diluted at 1:10000, 37° 1 hour.



Western blot analysis of various lysate, antibody was diluted at 1000. Secondary antibody (catalog#: RS0002) was diluted at 1:20000