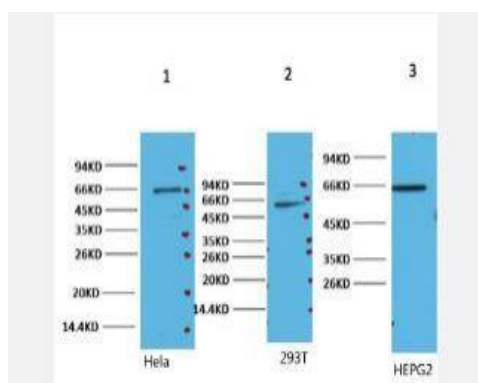


NFkB p65 Monoclonal Antibody(14H2)

Catalog No.	IMB0038
Reactivity	Human;Mouse;Rat
Applications	WB; IHC-p; IP
Gene Name	RELA
Protein Name	Transcription factor p65
Human Gene Id	5970
Swiss-Prot	Q04206
Formulation	PBS, pH 7.4, containing 0.5%BSA, 0.02% sodium azide as Preservative and 50% Glycerol.
Source	Monoclonal, Mouse
Dilution	WB: 1:1000-3000 IHC: 1:200 IP:1:200
Purification	The antibody was affinity-purified from mouse ascites by affinity-chromatography using specific immunogen.
Concentration	-
Storage&Stability	-20°C/1 year
Background	NF-kappa-B is a ubiquitous transcription factor involved in several biological processes. It is held in the cytoplasm in an inactive state by specific inhibitors. Upon degradation of the inhibitor, NF-kappa-B moves to the nucleus and activates transcription of specific genes. NF-kappa-B is composed of NFKB1 or NFKB2 bound to either REL, RELA, or RELB. The most abundant form of NF-kappa-B is NFKB1 complexed with the product of this gene, RELA. Four transcript variants encoding different isoforms have been found for this gene. [provided by RefSeq, Sep 2011],
Subcellular Location.	Nucleus. Cytoplasm. Nuclear, but also found in the cytoplasm in an inactive form complexed to an inhibitor (I-kappa-B) (PubMed:1493333). Colocalized with DDX1 in the nucleus upon TNF-alpha induction (PubMed:19058135). Colocalizes with GFI1 in the nucleus after LPS stimulation (PubMed:20547752). Translocation to the nucleus is impaired in L.monocytogenes infection (PubMed:20855622).
BiowMW	60219

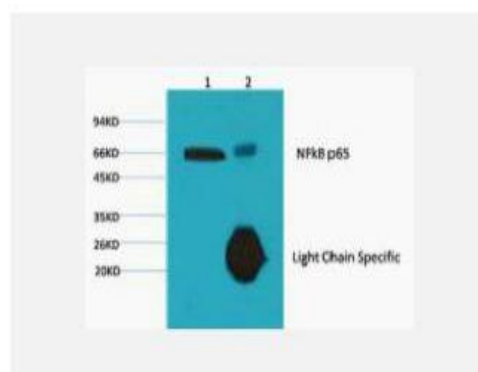
Products Images:



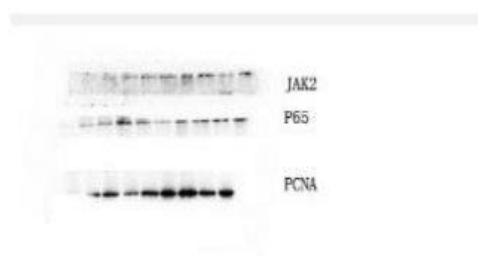
Western blot analysis of 1) HeLa, 2) 293T, 3) HepG, diluted at 1:2000.



IHC staining of mouse hippocampus tissue, diluted at 1:200.



1) Input: HeLa Cell Lysate 2) IP product: IP dilute 1:200



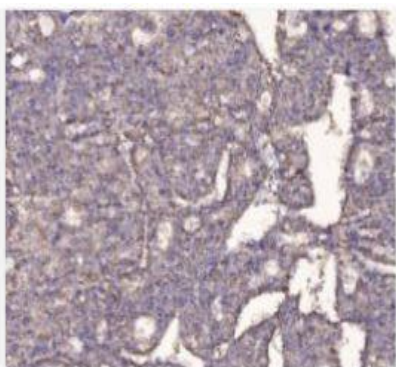
The picture was kindly provided by our customer.

The First Affiliated Hospital of China Medical University
Dr. HouDianDong



The First Affiliated Hospital of China Medical University
Dr. HouDianDong

The picture was kindly provided by our customer.



Immunohistochemical analysis of paraffin-embedded human
Moderately differentiated hepatocellular carcinoma Antibody
was diluted at 1:200(4° overnight).