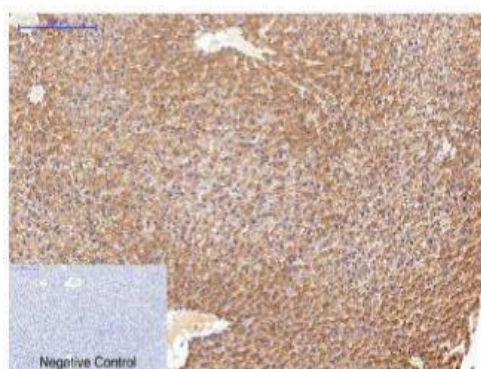


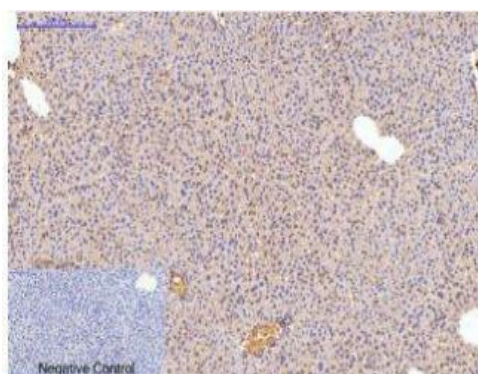
## Fibronectin Monoclonal Antibody(M9)

<b>Catalog No.</b>	IMB0034
<b>Reactivity</b>	Human;Mouse;Rat
<b>Applications</b>	WB; IHC-p; IF/ICC
<b>Gene Name</b>	FN1
<b>Protein Name</b>	Fibronectin
<b>Human Gene Id</b>	2335
<b>Swiss-Prot</b>	P02751
<b>Formulation</b>	PBS, pH 7.4, containing 0.5%BSA, 0.02% sodium azide as Preservative and 50% Glycerol.
<b>Source</b>	Monoclonal, Mouse
<b>Dilution</b>	WB: 1:1000-2000 IF: 1:200 IHC: 1:50-300
<b>Purification</b>	The antibody was affinity-purified from mouse ascites by affinity-chromatography using specific immunogen.
<b>Concentration</b>	-
<b>Storage&amp;Stability</b>	-20°C/1 year
<b>Background</b>	This gene encodes fibronectin, a glycoprotein present in a soluble dimeric form in plasma, and in a dimeric or multimeric form at the cell surface and in extracellular matrix. The encoded preproprotein is proteolytically processed to generate the mature protein. Fibronectin is involved in cell adhesion and migration processes including embryogenesis, wound healing, blood coagulation, host defense, and metastasis. The gene has three regions subject to alternative splicing, with the potential to produce 20 different transcript variants, at least one of which encodes an isoform that undergoes proteolytic processing. The full-length nature of some variants has not been determined. [provided by RefSeq, Jan 2016],
<b>Subcellular Location.</b>	Secreted, extracellular space, extracellular matrix.
<b>BiowMW</b>	262607

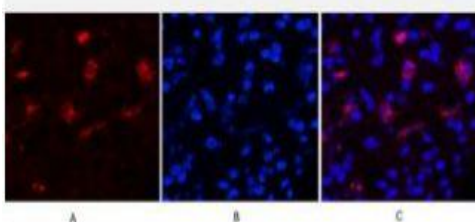
### Products Images:



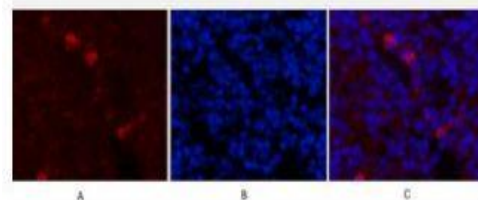
Immunohistochemical analysis of paraffin-embedded Rat-liver tissue. 1, Fibronectin Monoclonal Antibody(M9) was diluted at 1:200(4°C, overnight). 2, Sodium citrate pH 6.0 was used for antibody retrieval(>98°C, 20min). 3, Secondary antibody was diluted at 1:200(room temperature, 30min). Negative control was used by secondary antibody only.



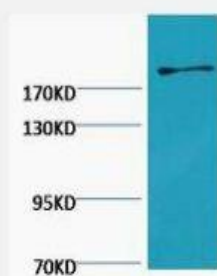
Immunohistochemical analysis of paraffin-embedded Mouse-liver tissue. 1, Fibronectin Monoclonal Antibody(M9) was diluted at 1:200(4°C, overnight). 2, Sodium citrate pH 6.0 was used for antibody retrieval(>98°C, 20min). 3, Secondary antibody was diluted at 1:200(room temperature, 30min). Negative control was used by secondary antibody only.



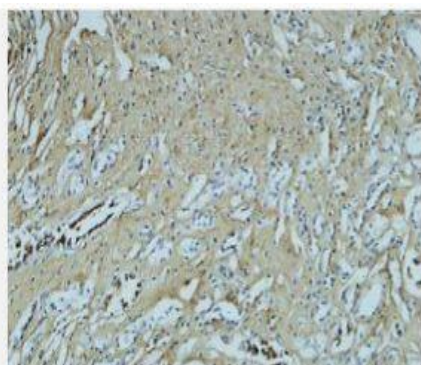
Immunofluorescence analysis of Human-appendix tissue. 1, Fibronectin Monoclonal Antibody(M9)(red) was diluted at 1:200(4°C, overnight). 2, Cy3 labeled Secondary antibody was diluted at 1:300(room temperature, 50min). 3, Picture B: DAPI(blue) 10min. Picture A: Target. Picture B: DAPI. Picture C: merge of A+B



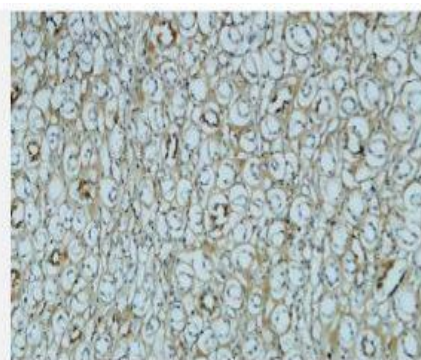
Immunofluorescence analysis of Mouse-spleen tissue. 1, Fibronectin Monoclonal Antibody(M9)(red) was diluted at 1:200(4°C, overnight). 2, Cy3 labeled Secondary antibody was diluted at 1:300(room temperature, 50min). 3, Picture B: DAPI(blue) 10min. Picture A: Target. Picture B: DAPI. Picture C: merge of A+B



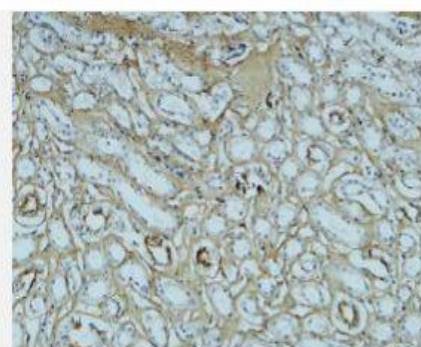
Western blot analysis of Hela, diluted at 1:2000.



Immunohistochemical analysis of paraffin-embedded Human kidney. 1, Antibody was diluted at 1:100(4° overnight). 2, High-pressure and temperature EDTA, pH8.0 was used for antigen retrieval. 3,Secondary antibody was diluted at 1:200(room temperature, 30min).



Immunohistochemical analysis of paraffin-embedded Human kidney. 1, Antibody was diluted at 1:100(4° overnight). 2, High-pressure and temperature EDTA, pH8.0 was used for antigen retrieval. 3,Secondary antibody was diluted at 1:200(room temperature, 30min).



Immunohistochemical analysis of paraffin-embedded Human kidney. 1, Antibody was diluted at 1:100(4° overnight). 2, High-pressure and temperature EDTA, pH8.0 was used for antigen retrieval. 3,Secondary antibody was diluted at 1:200(room temperature, 30min).