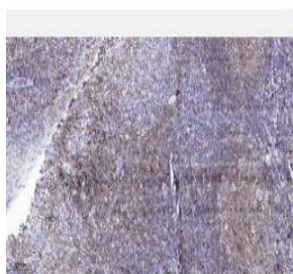


Claudin-2 Mouse Monoclonal Antibody(8H11)

Catalog No.	IMB0029
Reactivity	Human; Mouse; Rat
Applications	WB; IHC
Gene Name	CLDN2 PSEC0059 SP82 UNQ705/PRO1356
Protein Name	Claudin-2
Human Gene Id	9075
Swiss-Prot	P57739
Formulation	Liquid in PBS containing 50% glycerol, 0.5% BSA and 0.02% sodium azide.
Source	Monoclonal, Mouse
Dilution	IHC-p: 1:50-200 WB: 1:500-2000
Purification	The antibody was affinity-purified from mouse ascites by affinity-chromatography using specific immunogen.
Concentration	1 mg/ml
Storage&Stability	-20°C/1 year
Background	This gene product belongs to the claudin protein family whose members have been identified as major integral membrane proteins localized exclusively at tight junctions. Claudins are expressed in an organ-specific manner and regulate tissue-specific physiologic properties of tight junctions. This protein is expressed in the intestine. Alternatively spliced transcript variants with different 5' untranslated region have been found for this gene.[provided by RefSeq, Jan 2010],
Subcellular Location.	Cell junction, tight junction. Cell membrane; Multi-pass membrane protein.
BiowMW	-

Products Images:



Immunohistochemical analysis of paraffin-embedded human tonsil. 1, Antibody was diluted at 1:200(4° overnight). 2, Tris-EDTA,pH9.0 was used for antigen retrieval. 3,Secondary antibody was diluted at 1:200(room temperature, 45min).