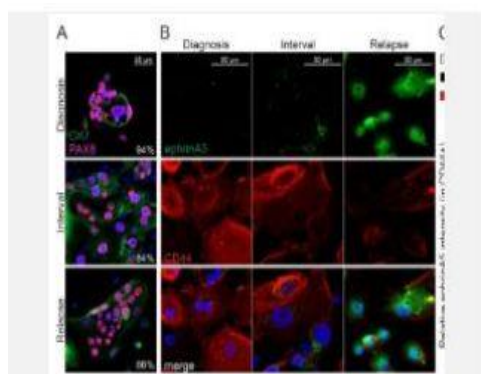


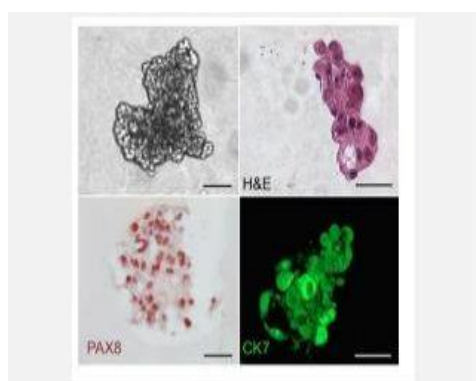
## CK7 Monoclonal Antibody(12D7)

<b>Catalog No.</b>	IMB0027
<b>Reactivity</b>	Human;Mouse;Rat
<b>Applications</b>	IF/ICC; WB; IHC-p; IP
<b>Gene Name</b>	KRT7
<b>Protein Name</b>	Keratin type II cytoskeletal 7
<b>Human Gene Id</b>	3855
<b>Swiss-Prot</b>	P08729
<b>Formulation</b>	PBS, pH 7.4, containing 0.5%BSA, 0.02% sodium azide as Preservative and 50% Glycerol.
<b>Source</b>	Monoclonal, Mouse
<b>Dilution</b>	IF: 1:50-200 WB: 1:1000-2000 IHC: 1:200 IP:1:200
<b>Purification</b>	The antibody was affinity-purified from mouse ascites by affinity-chromatography using specific immunogen.
<b>Concentration</b>	-
<b>Storage&amp;Stability</b>	-20°C/1 year
<b>Background</b>	The protein encoded by this gene is a member of the keratin gene family. The type II cytokeratins consist of basic or neutral proteins which are arranged in pairs of heterotypic keratin chains coexpressed during differentiation of simple and stratified epithelial tissues. This type II cytokeratin is specifically expressed in the simple epithelia lining the cavities of the internal organs and in the gland ducts and blood vessels. The genes encoding the type II cytokeratins are clustered in a region of chromosome 12q12-q13. Alternative splicing may result in several transcript variants; however, not all variants have been fully described. [provided by RefSeq, Jul 2008],
<b>Subcellular Location.</b>	Cytoplasm.
<b>Biological MW</b>	51418

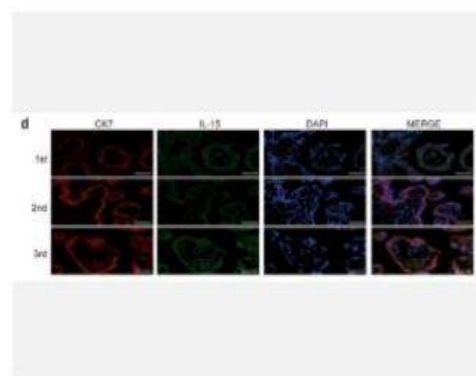
### Products Images:



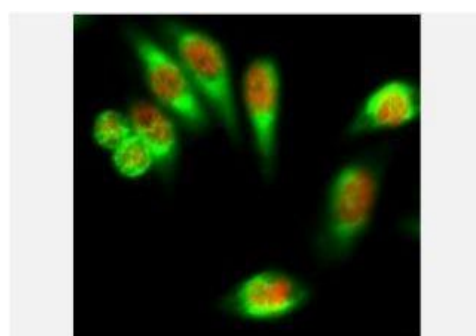
Jukonen, J., Moyano-Galceran, L., Höpfner, K. et al. Aggressive and recurrent ovarian cancers upregulate ephrinA5, a non-canonical effector of EphA2 signaling duality. *Sci Rep*11, 8856 (2021).



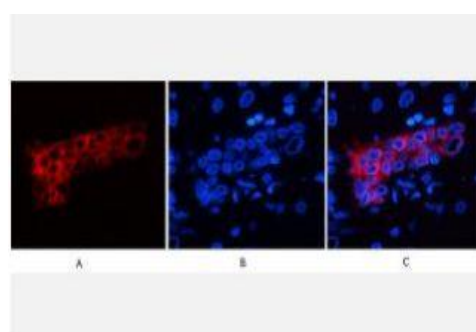
Petilă, E.A., Gonzalez-Molina, J., Moyano-Galceran, L. et al. Co-evolution of matrisome and adaptive adhesion dynamics drives ovarian cancer chemoresistance. Nat Commun 12, 3904 (2021). h



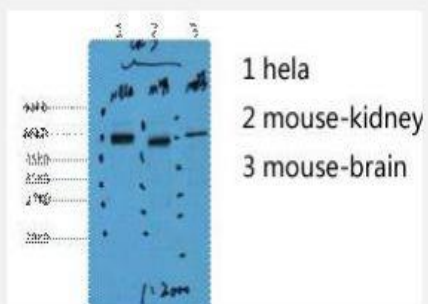
Li, J., Li, Y., Zhou, X. et al. Upregulation of IL-15 in the placenta alters trophoblasts behavior contributing to gestational diabetes mellitus. Cell Biosci 11, 33 (2021).



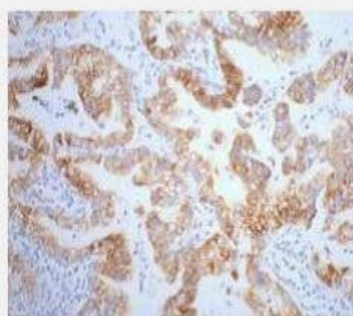
Immunofluorescence analysis of HeLa cell. 1, FoxO1 Polyclonal Antibody (red) was diluted at 1:200 (4° overnight). CK7 Monoclonal Antibody (12D7) (green) was diluted at 1:200 (4° overnight). 2, Goat Anti Rabbit Alexa Fluor 594 Catalog: RS3611 was diluted at 1:1000 (room temperature, 50min). Goat Anti Mouse Alexa Fluor 488 Catalog: RS3208 was diluted at 1:1000 (room temperature, 50min).



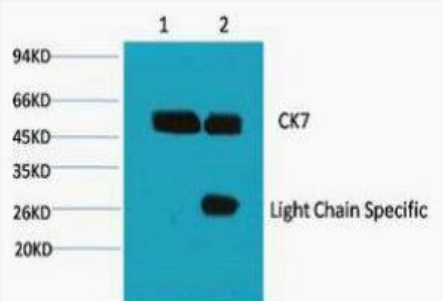
Immunofluorescence analysis of human-liver tissue. 1, CK7 Monoclonal Antibody (12D7) (red) was diluted at 1:200 (4°C, overnight). 2, Cy3 labeled Secondary antibody was diluted at 1:300 (room temperature, 50min). 3, Picture B: DAPI (blue) 10min. Picture A: Target. Picture B: DAPI. Picture C: merge of A+B



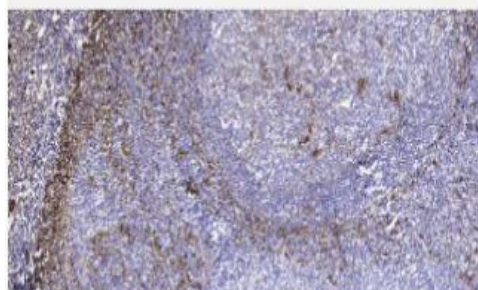
Western blot analysis of 1) HeLa, 2) Mouse Kidney, 3) Mouse Brain, diluted at 1:2000.



IHC staining of human lung cancer tissue, diluted at 1:200.



1) Input: HeLa Cell Lysate 2) IP product: IP dilute 1:200



Immunohistochemical analysis of paraffin-embedded human tonsil. 1, Tris-EDTA, pH 9.0 was used for antigen retrieval. 2 Antibody was diluted at 1:200 (4° overnight). 3, Secondary antibody was diluted at 1:200 (room temperature, 45min).