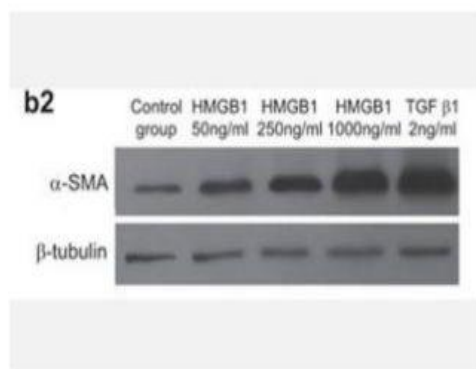


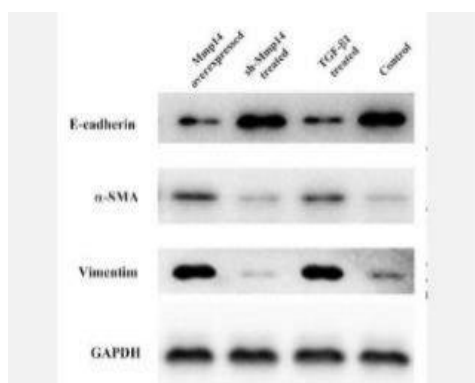
α -SMA Monoclonal Antibody(6A12)

Catalog No.	IMB0023
Reactivity	Human;Mouse;Rat
Applications	WB; IF/ICC; IHC-p
Gene Name	ACTA2
Protein Name	Actin, aortic smooth muscle
Human Gene Id	59
Swiss-Prot	P62736
Formulation	PBS, pH 7.4, containing 0.5%BSA, 0.02% sodium azide as Preservative and 50% Glycerol.
Source	Monoclonal, Mouse
Dilution	WB: 1:10000-100000 IF: 1:200 IHC:1:200-2000
Purification	The antibody was affinity-purified from mouse ascites by affinity-chromatography using epitope-specific immunogen.
Concentration	-
Storage&Stability	-20°C/1 year
Background	The protein encoded by this gene belongs to the actin family of proteins, which are highly conserved proteins that play a role in cell motility, structure and integrity. Alpha, beta and gamma actin isoforms have been identified, with alpha actins being a major constituent of the contractile apparatus, while beta and gamma actins are involved in the regulation of cell motility. This actin is an alpha actin that is found in skeletal muscle. Defects in this gene cause aortic aneurysm familial thoracic type 6. Multiple alternatively spliced variants, encoding the same protein, have been identified. [provided by RefSeq, Nov 2008],
Subcellular Location.	Cytoplasm, cytoskeleton.
BiowMW	-

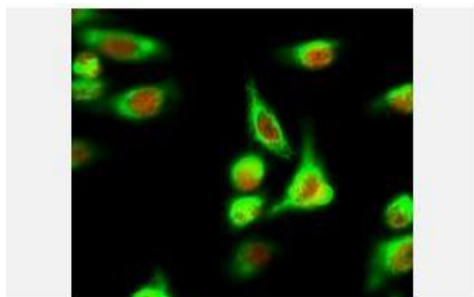
Products Images:



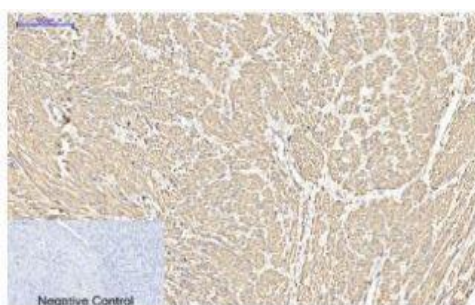
Hou, Changchun, et al. "HMGB1 contributes to allergen-induced airway remodeling in a murine model of chronic asthma by modulating airway inflammation and activating lung fibroblasts." Cellular & molecular immunology 12.4 (2015): 409.



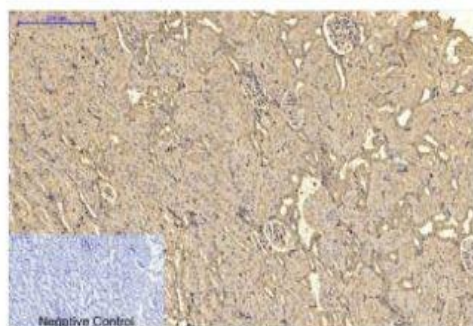
Xiong, Ye, et al. "NOGO-B promotes EMT in lung fibrosis via MMP14 mediates free TGF-beta1 formation." *Oncotarget* 8.41 (2017): 71024.



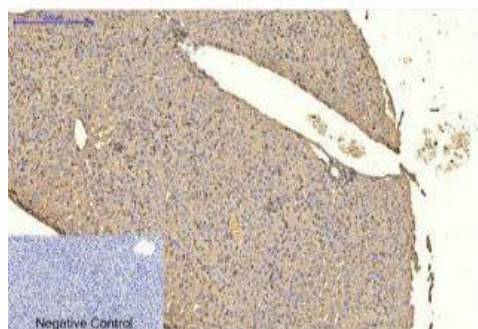
Immunofluorescence analysis of Hela cell. 1, c-Fos Polyclonal Antibody (red) was diluted at 1:200 (4° overnight). α-SMA Monoclonal Antibody (6A12) (green) was diluted at 1:200 (4° overnight). 2, Goat Anti Rabbit Alexa Fluor 594 Catalog: RS3611 was diluted at 1:1000 (room temperature, 50min). Goat Anti Mouse Alexa Fluor 488 Catalog: RS3208 was diluted at 1:1000 (room temperature, 50min).



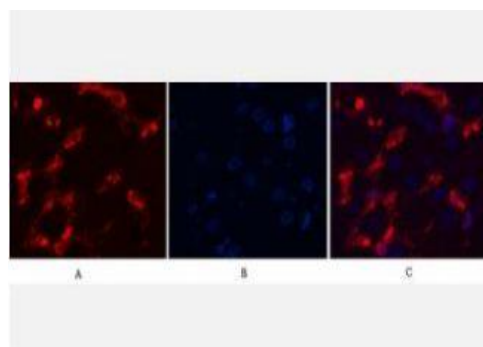
Immunohistochemical analysis of paraffin-embedded Human-uterus-cancer tissue. 1, α-SMA Monoclonal Antibody (6A12) was diluted at 1:200 (4°C, overnight). 2, Sodium citrate pH 6.0 was used for antibody retrieval (>98°C, 20min). 3, Secondary antibody was diluted at 1:200 (room temperature, 30min). Negative control was used by secondary antibody only.



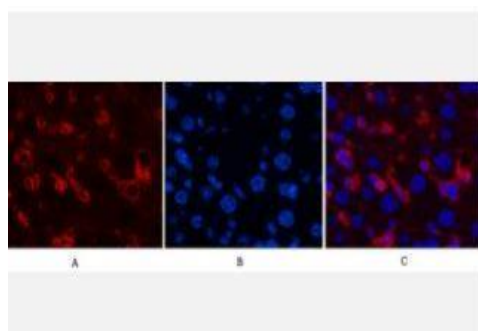
Immunohistochemical analysis of paraffin-embedded Rat-kidney tissue. 1, α-SMA Monoclonal Antibody (6A12) was diluted at 1:200 (4°C, overnight). 2, Sodium citrate pH 6.0 was used for antibody retrieval (>98°C, 20min). 3, Secondary antibody was diluted at 1:200 (room temperature, 30min). Negative control was used by secondary antibody only.



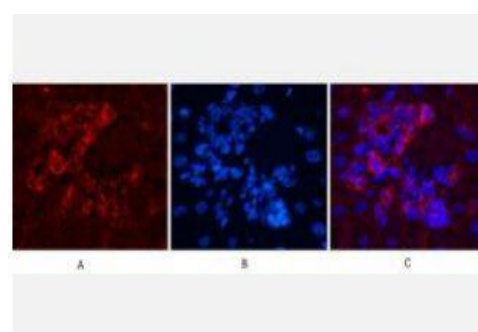
Immunohistochemical analysis of paraffin-embedded Mouse-liver tissue. 1, α -SMA Monoclonal Antibody(6A12) was diluted at 1:200(4°C, overnight). 2, Sodium citrate pH 6.0 was used for antibody retrieval(>98°C, 20min). 3, Secondary antibody was diluted at 1:200(room temperature, 30min). Negative control was used by secondary antibody only.



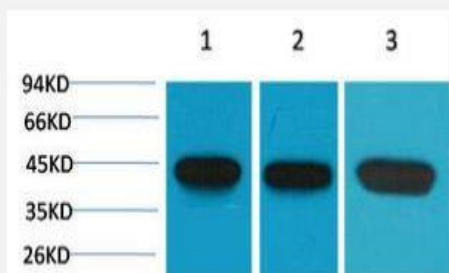
Immunofluorescence analysis of Human-liver tissue. 1, α -SMA Monoclonal Antibody(6A12)(red) was diluted at 1:200(4°C, overnight). 2, Cy3 labeled Secondary antibody was diluted at 1:300(room temperature, 50min). 3, Picture B: DAPI(blue) 10min. Picture A: Target. Picture B: DAPI. Picture C: merge of A+B



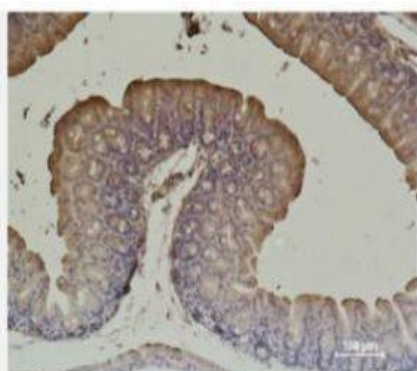
Immunofluorescence analysis of Mouse-liver tissue. 1, α -SMA Monoclonal Antibody(6A12)(red) was diluted at 1:200(4°C, overnight). 2, Cy3 labeled Secondary antibody was diluted at 1:300(room temperature, 50min). 3, Picture B: DAPI(blue) 10min. Picture A: Target. Picture B: DAPI. Picture C: merge of A+B



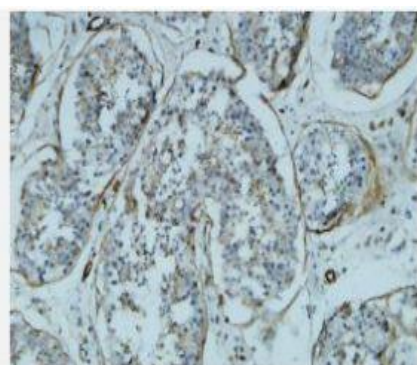
Immunofluorescence analysis of Rat-liver tissue. 1, α -SMA Monoclonal Antibody(6A12)(red) was diluted at 1:200(4°C, overnight). 2, Cy3 labeled Secondary antibody was diluted at 1:300(room temperature, 50min). 3, Picture B: DAPI(blue) 10min. Picture A: Target. Picture B: DAPI. Picture C: merge of A+B



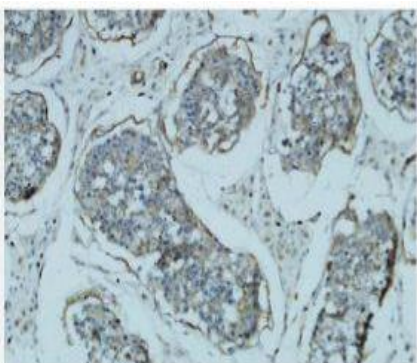
Western blot analysis of 1) Hela, 2) 3T3, 3) Rat Brain using α -SMA Monoclonal Antibody.



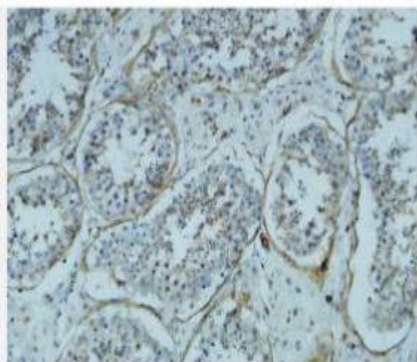
Immunohistochemical analysis of paraffin-embedded Mouse Cecal Tissue using α -SMA Monoclonal Antibody.



Immunohistochemical analysis of paraffin-embedded Human testis. 1, Antibody was diluted at 1:200(4° overnight). 2, High-pressure and temperature EDTA, pH8.0 was used for antigen retrieval. 3, Secondary antibody was diluted at 1:200(room temperature, 30min).



Immunohistochemical analysis of paraffin-embedded Human testis. 1, Antibody was diluted at 1:200(4° overnight). 2, High-pressure and temperature EDTA, pH8.0 was used for antigen retrieval. 3, Secondary antibody was diluted at 1:200(room temperature, 30min).



Immunohistochemical analysis of paraffin-embedded Human testis. 1, Antibody was diluted at 1:200(4° overnight). 2, High-pressure and temperature EDTA, pH8.0 was used for antigen retrieval. 3, Secondary antibody was diluted at 1:200(room temperature, 30min).