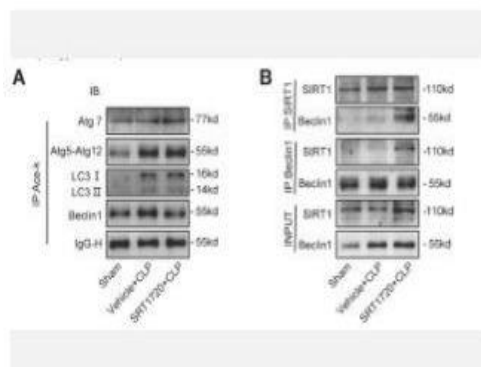


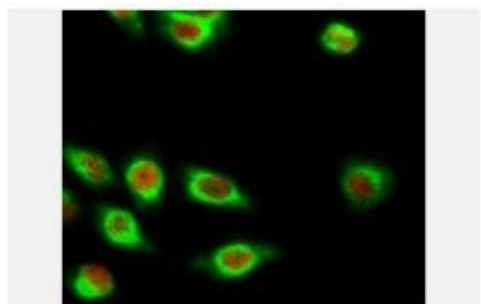
ATG5 mouse Monoclonal Antibody(3C7)

Catalog No.	IMB0022
Reactivity	Human;Mouse;Rat
Applications	IF/ICC; WB; IHC-p; IP
Gene Name	ATG5 APG5L ASP
Protein Name	Autophagy protein 5 (APG5-like) (Apoptosis-specIF:ic protein)
Human Gene Id	9494
Swiss-Prot	Q9H1Y0
Formulation	Liquid in PBS containing 50% glycerol, 0.5% BSA and 0.02% sodium azide.
Source	Monoclonal, Mouse
Dilution	IF: 1:50-200 IP: 1:50-200 WB: 1:500-2000 IHC-p: 1:50-300
PurIF:ication	The antibody was affinity-purIF:ied from mouse antiserum by affinity-chromatography using epitope-specIF:ic immunogen.
Concentration	1 mg/ml
Storage&Stability	-20°C/1 year
Background	The protein encoded by this gene, in combination with autophagy protein 12, functions as an E1-like activating enzyme in a ubiquitin-like conjugating system. The encoded protein is involved in several cellular processes, including autophagic vesicle formation, mitochondrial quality control after oxidative damage, negative regulation of the innate antiviral immune response, lymphocyte development and prolIF:eration, MHC II antigen presentation, adipocyte dIF:erentiation, and apoptosis. Several transcript variants encoding dIF:ferent protein isoforms have been found for this gene.
Subcellular Location.	Cytoplasm. Preautophagosomal structure membrane; Peripheral membrane protein. Colocalizes with nonmuscle actin. The conjugate detaches from the membrane immediately before or after autophagosome formation is completed (By similarity). Localizes also to discrete punctae along the ciliary axoneme and to the base of the ciliary axoneme.
BiowMW	-

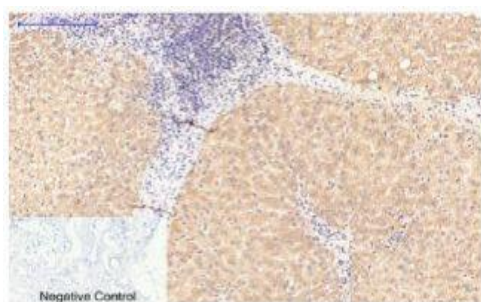
Products Images:



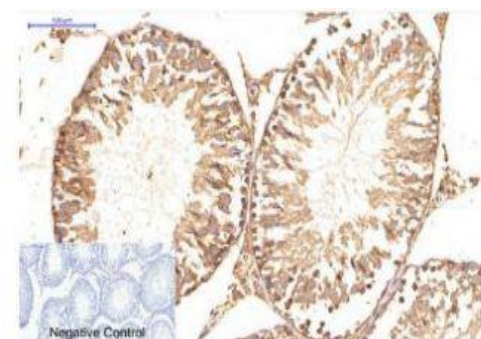
Deng, Z., Sun, M., Wu, J. et al. SIRT1 attenuates sepsis-induced acute kidney injury via Beclin1 deacetylation-mediated autophagy activation. *Cell Death Dis* 12, 217 (2021).



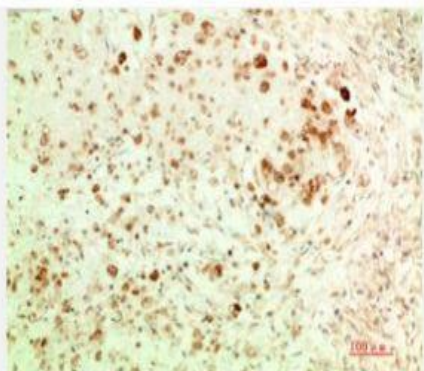
Immunofluorescence analysis of HeLa cell. 1, CREB-1 Polyclonal Antibody (red) was diluted at 1:200 (4° overnight). ATG5 mouse Monoclonal Antibody (3C7) (green) was diluted at 1:200 (4° overnight). 2, Goat Anti Rabbit Alexa Fluor 594 Catalog: RS3611 was diluted at 1:1000 (room temperature, 50min). Goat Anti Mouse Alexa Fluor 488 Catalog: RS3208 was diluted at 1:1000 (room temperature, 50min).



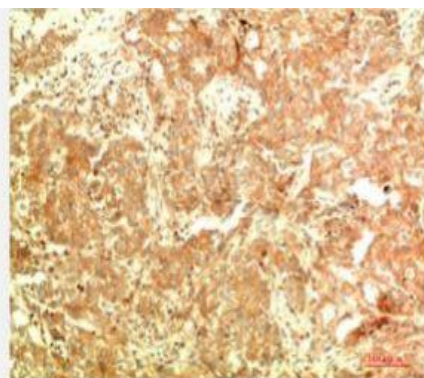
Immunohistochemical analysis of paraffin-embedded Human-breast tissue. 1, ATG5 Mouse Monoclonal Antibody (3C7) was diluted at 1:200 (4°C, overnight). 2, Sodium citrate pH 6.0 was used for antibody retrieval (>98°C, 20min). 3, Secondary antibody was diluted at 1:200 (room temperature, 30min). Negative control was used by secondary antibody only.



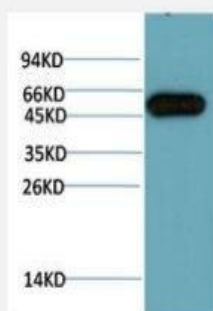
Immunohistochemical analysis of paraffin-embedded Rat-testis tissue. 1, ATG5 Mouse Monoclonal Antibody (3C7) was diluted at 1:200 (4°C, overnight). 2, Sodium citrate pH 6.0 was used for antibody retrieval (>98°C, 20min). 3, Secondary antibody was diluted at 1:200 (room temperature, 30min). Negative control was used by secondary antibody only.



Immunohistochemical analysis of paraffin-embedded Human Ovarian Carcinoma Tissue using ATG5 Mouse mAb diluted at 1:200.



Immunohistochemical analysis of paraffin-embedded Human Breast Carcinoma Tissue using ATG5 Mouse mAb diluted at 1:200.



Western blot analysis of Hela Cell Lysate using ATG5 Mouse mAb diluted at 1:10000