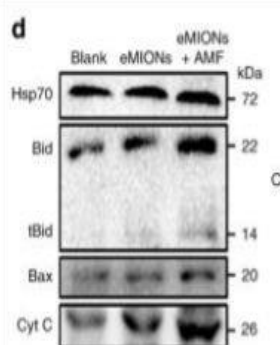


Bax mouse Monoclonal Antibody(6F11)

Catalog No.	IMB0015
Reactivity	Human;Rat;Mouse;Chicken
Applications	IF/ICC; WB; IHC-p
Gene Name	BAX
Protein Name	BAX
Human Gene Id	581
Swiss-Prot	Q07812
Formulation	Liquid in PBS containing 50% glycerol, 0.5% BSA and 0.02% sodium azide.
Source	Monoclonal, Mouse
Dilution	IF: 1:50-200 WB: 1:1000-2000 IHC: 1:100-200
Purification	The antibody was affinity-purified from mouse ascites by affinity-chromatography using specific immunogen.
Concentration	1 mg/ml
Storage&Stability	-20°C/1 year
Background	The protein encoded by BAX (BCL2 associated X, apoptosis regulator) belongs to the BCL2 protein family. BCL2 family members form hetero- or homodimers and act as anti- or pro-apoptotic regulators that are involved in a wide variety of cellular activities. This protein forms a heterodimer with BCL2, and functions as an apoptotic activator. This protein is reported to interact with, and increase the opening of, the mitochondrial voltage-dependent anion channel (VDAC), which leads to the loss in membrane potential and the release of cytochrome c. The expression of this gene is regulated by the tumor suppressor P53 and has been shown to be involved in P53-mediated apoptosis. Multiple alternatively spliced transcript variants, which encode different isoforms, have been reported for BAX.
Subcellular Location.	[Isoform Alpha]: Mitochondrion outer membrane; Single-pass membrane protein. Cytoplasm. Colocalizes with 14-3-3 proteins in the cytoplasm. Under stress conditions, undergoes a conformation change that causes release from JNK-phosphorylated 14-3-3 proteins and translocation to the mitochondrion membrane. Upon Sendai virus infection, recruited to the mitochondrion through interaction with IRF3 (PubMed:25609812). ; [Isoform Beta]: Cytoplasm.; [Isoform Gamma]: Cytoplasm; [Isoform Delta]: Cytoplasm.
BiowMW	-

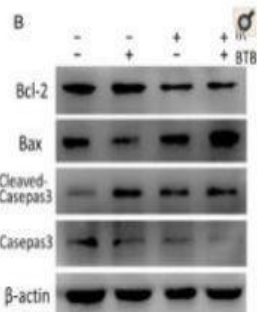
Products Images:



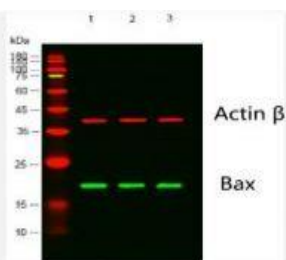
Zhang, Y., Wang, X., Chu, C. et al. Genetically engineered magnetic nanocages for cancer magneto-catalytic theranostics. Nat Commun 11, 5421 (2020).



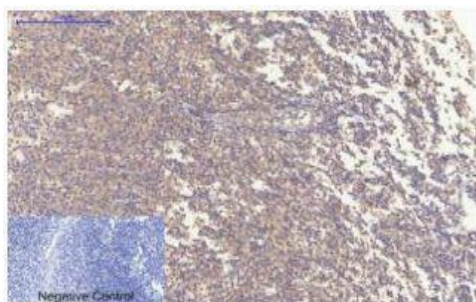
Chen, Puxiang, et al. "Long noncoding RNA LINC00152 promotes cell proliferation through competitively binding endogenous miR-125b with MCL-1 by regulating mitochondrial apoptosis pathways in ovarian cancer." Cancer medicine 7.9 (2018): 4530-4541.



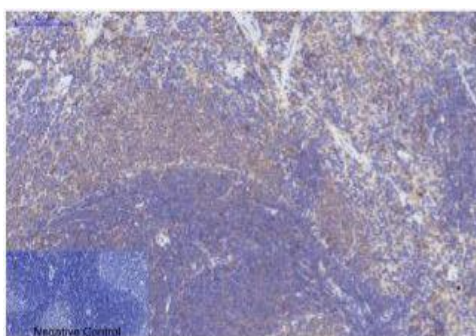
Wang, Yupei, et al. "Selective ATP hydrolysis inhibition in F1Fo ATP synthase enhances radiosensitivity in non-small-cell lung cancer cells (A549)." Oncotarget 8.32 (2017): 53602.



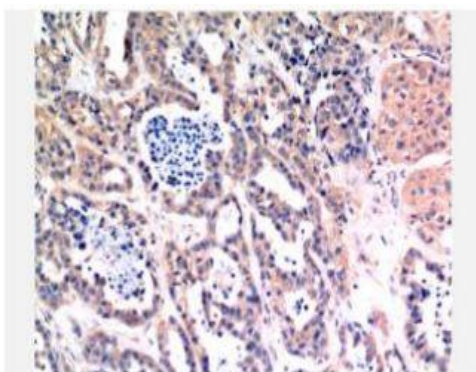
Western blot analysis of lysates from 1) HeLa Cell Lysate, 2) C2C12 Cell Lysate, 3) PC12 Cell Lysate cells, (Green) primary antibody was diluted at 1:1000, 4° over night, Dylight 800 secondary antibody(Immunoway:RS23910) was diluted at 1:10000, 37° 1hour. (Red) Actin β Polyclonal Antibody (Immunoway:YT0099) antibody was diluted at 1:5000 as loading control, 4° over night, Dylight 680 secondary antibody(Immunoway:RS23720) was diluted at 1:10000, 37° 1hour.



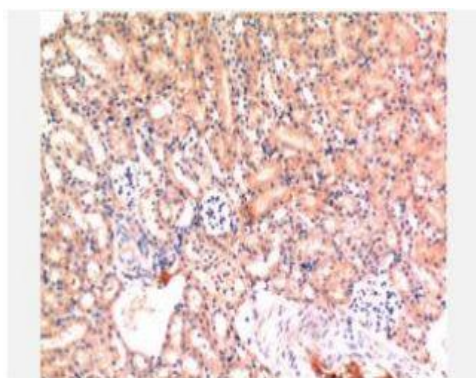
Immunohistochemical analysis of paraffin-embedded Human-Tonsil tissue. 1,Bax Mouse Monoclonal Antibody(6F11) was diluted at 1:200(4°C,overnight). 2, Sodium citrate pH 6.0 was used for antibody retrieval(>98°C,20min). 3,Secondary antibody was diluted at 1:200(room temperature, 30min). Negative control was used by secondary antibody only.



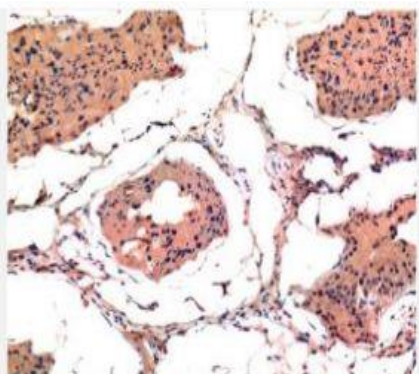
Immunohistochemical analysis of paraffin-embedded Rat-spleen tissue. 1,Bax Mouse Monoclonal Antibody(6F11) was diluted at 1:200(4°C,overnight). 2, Sodium citrate pH 6.0 was used for antibody retrieval(>98°C,20min). 3,Secondary antibody was diluted at 1:200(room temperature, 30min). Negative control was used by secondary antibody only.



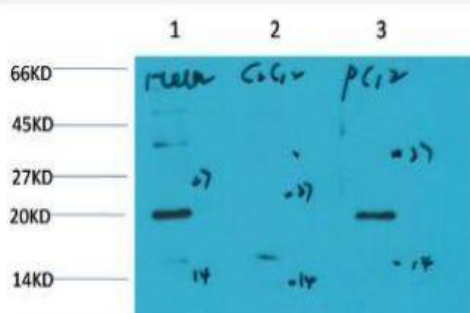
Immunohistochemical analysis of paraffin-embedded Human Breast Carcinoma Tissue using Bax Mouse mAb diluted at 1:200.



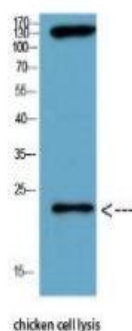
Immunohistochemical analysis of paraffin-embedded Mouse Kidney Tissue using Bax Mouse mAb diluted at 1:200.



Immunohistochemical analysis of paraffin-embedded Rat Testis Tissue using Bax Mouse mAb diluted at 1:200.



Western blot analysis of 1) HeLa Cell Lysate, 2) C2C12 Cell Lysate, 3) PC12 Cell Lysate using Bax Mouse mAb diluted at 1:1000.



Western Blot analysis of chicken cell lysis using Antibody diluted at 1:1000