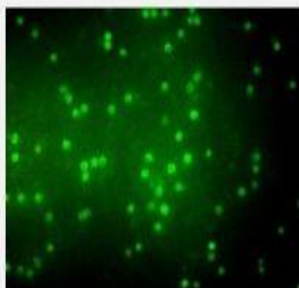


CD3 Monoclonal Antibody-FITC labeled

Catalog No.	IMB0007
Reactivity	Human
Applications	IF/ICC; ELISA
Gene Name	CD247
Protein Name	T-cell surface glycoprotein CD3 zeta chain
Human Gene Id	919
Swiss-Prot	P20963
Formulation	Purified antibody in PBS containing 0.03% sodium azide.
Source	Monoclonal, Mouse
Dilution	IF: 1:200-1:1000 ELISA: 1:10000
Purification	Affinity purification
Concentration	1 mg/ml
Storage&Stability	-20°C/1 year
Background	The protein encoded by this gene is T-cell receptor zeta, which together with T-cell receptor alpha/beta and gamma/delta heterodimers, and with CD3-gamma, -delta and -epsilon, forms the T-cell receptor-CD3 complex. The zeta chain plays an important role in coupling antigen recognition to several intracellular signal-transduction pathways. Low expression of the antigen results in impaired immune response. Two alternatively spliced transcript variants encoding distinct isoforms have been found for this gene.
Subcellular Location.	Cell membrane; Single-pass type I membrane protein.
BiowMW	-

Products Images:



Immunofluorescence analysis of peripheral blood T cells
using CD3 Monoclonal Antibody.

