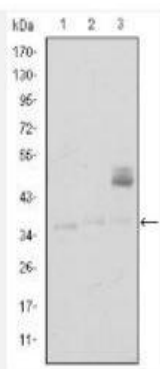


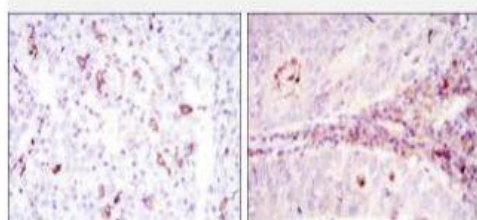
CD1A Monoclonal Antibody

Catalog No.	IMB0004
Reactivity	Human
Applications	WB; IHC-p; IF/ICC; ELISA
Gene Name	CD1A
Protein Name	T-cell surface glycoprotein CD1a
Human Gene Id	909
Swiss-Prot	P06126
Formulation	Ascitic fluid containing 0.03% sodium azide, 0.5% BSA, 50% glycerol.
Source	Monoclonal, Mouse
Dilution	WB: 1:500-1:2000 IHC: 1:200-1:1000 IF: 1:200-1:1000 ELISA: 1:10000
Purification	Affinity purification
Concentration	-
Storage & Stability	-20°C/1 year
Background	This gene encodes a member of the CD1 family of transmembrane glycoproteins, which are structurally related to the major histocompatibility complex (MHC) proteins and form heterodimers with beta-2-microglobulin. The CD1 proteins mediate the presentation of primarily lipid and glycolipid antigens of self or microbial origin to T cells. The human genome contains five CD1 family genes organized in a cluster on chromosome 1. The CD1 family members are thought to differ in their cellular localization and specificity for particular lipid ligands. The protein encoded by this gene localizes to the plasma membrane and to recycling vesicles of the early endocytic system. Alternative splicing results in multiple transcript variants. [provided by RefSeq, Mar 2016],
Subcellular Location.	Cell membrane; Single-pass type I membrane protein. Membrane raft ; Single-pass type I membrane protein. Endosome membrane ; Single-pass type I membrane protein. Subject to intracellular trafficking between the cell membrane and endosomes (PubMed:11231314). Localizes to cell surface lipid rafts (PubMed:18178838).
Bioware	-

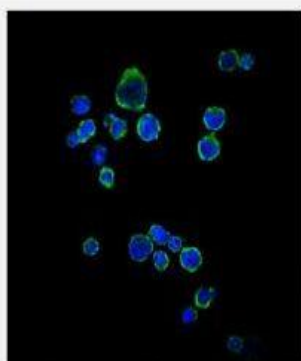
Products Images:



Western Blot analysis using CD1A Monoclonal Antibody against K562 (1), RAJI (2), and MOLT4 (3) cell lysate.



Immunohistochemistry analysis of paraffin-embedded cervical cancer tissues (left) and colon cancer tissues (right) with DAB staining using CD1A Monoclonal Antibody.



Immunofluorescence analysis of RAJI cells using CD1A Monoclonal Antibody (green). Blue: DRAQ5 fluorescent DNA dye.

