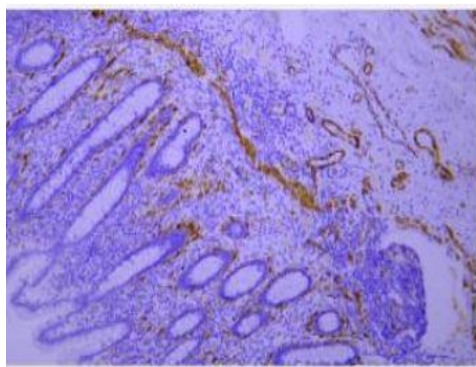


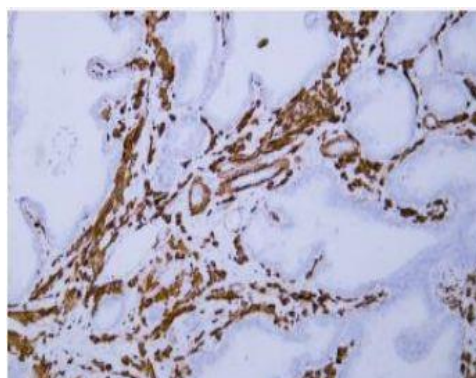
Actin, smooth muscle (SMA) mouse mAb(ABT276)

Catalog No.	IML0842
Reactivity	Human
Applications	IHC-p; IF(paraffin section)
Gene Name	-
Protein Name	Actin, smooth muscle (SMA)
Human Gene Id	-
Swiss-Prot	P62736:P63267
Formulation	Liquid in PBS containing 50% glycerol, 0.5% BSA and 0.159% sodium azide.
Source	Monoclonal, Mouse:IgG1, kappa
Dilution	IHC-p: 1:100-200 IF: 1:100-500
Purification	The antibody was affinity-purified from mouse ascites by affinity-chromatography using specific immunogen.
Concentration	0.48mg:mL
Storage&Stability	-20°C:1 year
Background	#N:A
Subcellular Location	Colon, Appendix, Uterus
BiowMW	-

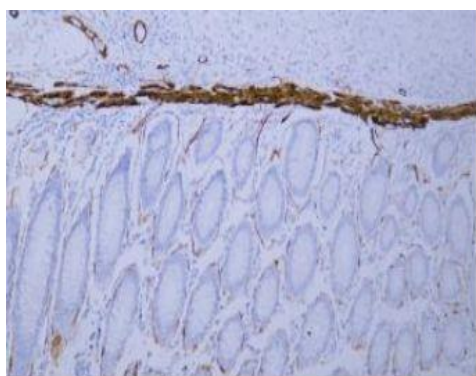
Products Images:



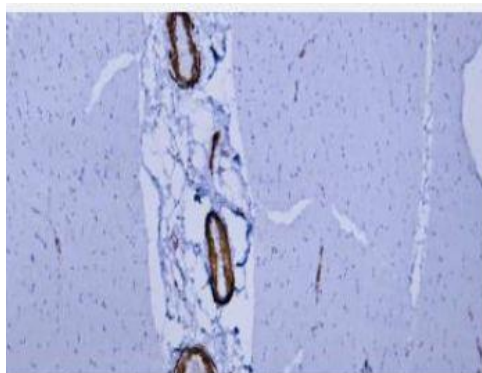
Immunohistochemical analysis of paraffin-embedded human appendix Antibody was diluted at 1:200(4° overnight).



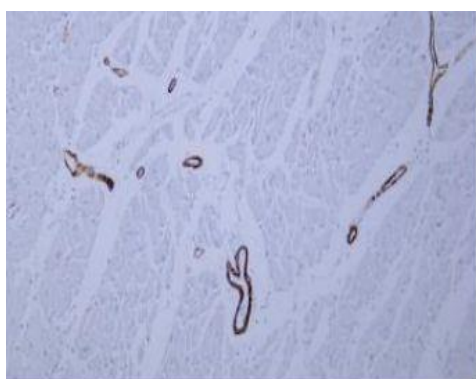
Human prostate tissue was stained with anti-SMA(ABT276) antibody.



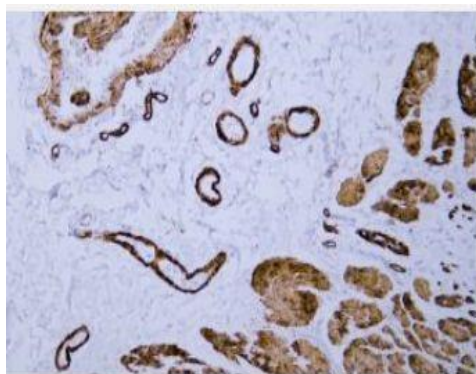
Human colon tissue was stained with anti-SMA(ABT276) antibody.



Human skeletal muscle tissue was stained with anti-SMA(ABT276) antibody.



Human cardiac muscle tissue was stained with anti-SMA(ABT276) antibody.



Human esophagus tissue was stained with anti-SMA(ABT276) antibody.