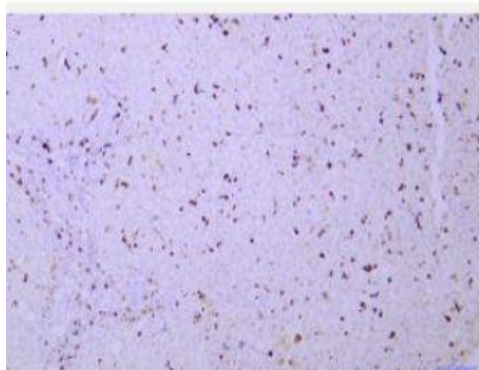


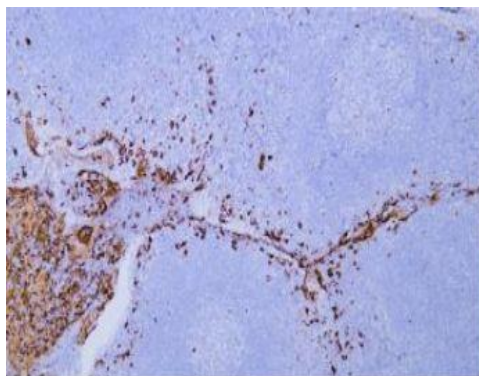
Lysozyme mouse mAb(ABT342)

Catalog No.	IML0840
Reactivity	Human
Applications	IHC-p; IF(paraffin section)
Gene Name	LYZ LZM
Protein Name	Lysozyme
Human Gene Id	4069
Swiss-Prot	P61626
Formulation	Liquid in PBS containing 50% glycerol, 0.5% BSA and 0.157% sodium azide.
Source	Monoclonal, Mouse:IgG3, Kappa
Dilution	IHC-p: 1:100-200 IF: 1:100-500
Purification	The antibody was affinity-purified from mouse ascites by affinity-chromatography using specific immunogen.
Concentration	0.16mg:mL
Storage&Stability	-20°C:1 year
Background	#N:A
Subcellular Location	-
BiowMW	-

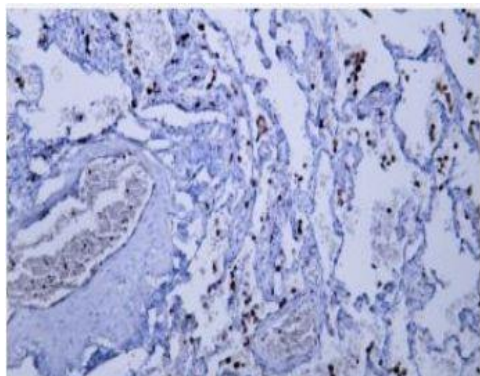
Products Images:



Immunohistochemical analysis of paraffin-embedded human liver Antibody was diluted at 1:200(4° overnight).



Human tonsil tissue was stained with Anti-Lysozyme (ABT342) Antibody



Human lung tissue was stained with Anti-Lysozyme (ABT342)
Antibody