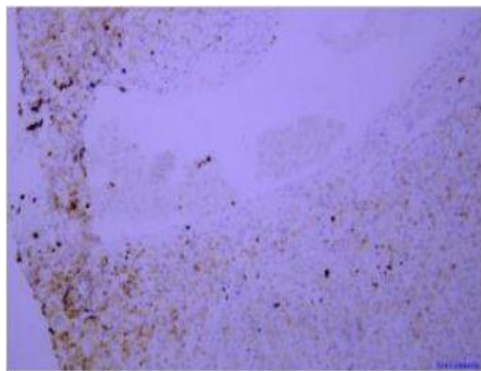


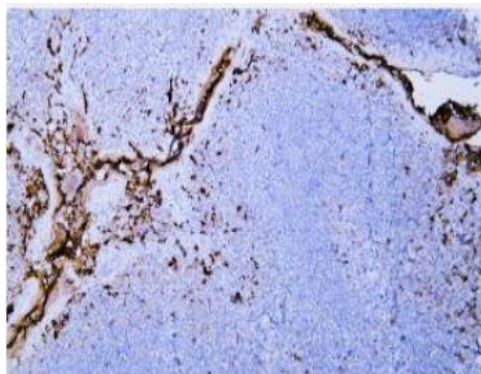
## Lysozyme mouse mAb(ABT191)

<b>Catalog No.</b>	IML0839
<b>Reactivity</b>	Human
<b>Applications</b>	IHC-p; IF(paraffin section)
<b>Gene Name</b>	LYZ LYM
<b>Protein Name</b>	Lysozyme
<b>Human Gene Id</b>	4069
<b>Swiss-Prot</b>	P61626
<b>Formulation</b>	Liquid in PBS containing 50% glycerol, 0.5% BSA and 0.156% sodium azide.
<b>Source</b>	Monoclonal, Mouse:IgG3, Kappa
<b>Dilution</b>	IHC-p: 1:100-200 IF: 1:100-500
<b>Purification</b>	The antibody was affinity-purified from mouse ascites by affinity-chromatography using specific immunogen.
<b>Concentration</b>	0.08mg/mL
<b>Storage&amp;Stability</b>	-20°C:1 year
<b>Background</b>	#N:A
<b>Subcellular Location</b>	-
<b>BiowMW</b>	-

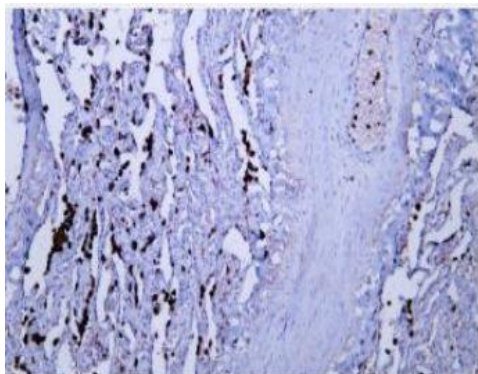
### Products Images:



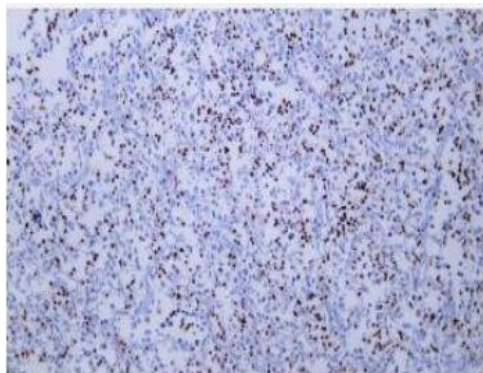
Immunohistochemical analysis of paraffin-embedded human adrenal gland Antibody was diluted at 1:200(4° overnight).



Human tonsil tissue was stained with Anti-Lysozyme (ABT191) Antibody



Human lung tissue was stained with Anti-Lysozyme (ABT191) Antibody



Human malignant fibrous histiocytoma tissue was stained with Anti-Lysozyme (ABT191) Antibody