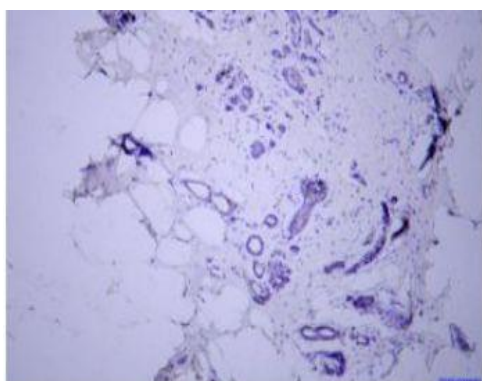


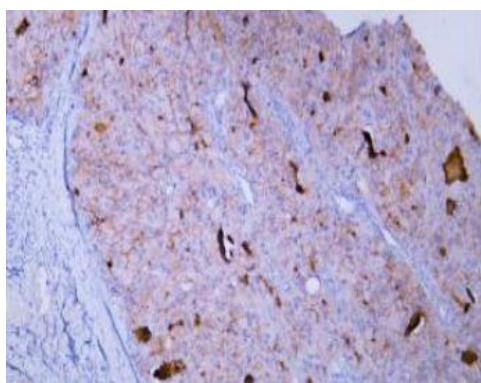
Glypican-3(GPC3) mouse mAb(ABT068)

Catalog No.	IML0828
Reactivity	Human
Applications	IHC-p; IF(paraffin section)
Gene Name	GPC3 OCI5
Protein Name	Glypican-3(GPC3)
Human Gene Id	2719
Swiss-Prot	P51654
Formulation	Liquid in PBS containing 50% glycerol, 0.5% BSA and 0.143% sodium azide.
Source	Monoclonal, Mouse:IgG1, Kappa
Dilution	IHC-p: 1:100-200 IF: 1:100-500
Purification	The antibody was affinity-purified from mouse ascites by affinity-chromatography using specific immunogen.
Concentration	0.7mg:mL
Storage&Stability	-20°C:1 year
Background	Cell surface heparan sulfate proteoglycans are composed of a membrane-associated protein core substituted with a variable number of heparan sulfate chains. Members of the glypican-related integral membrane proteoglycan family (GRIPS) contain a core protein anchored to the cytoplasmic membrane via a glycosyl phosphatidylinositol linkage. These proteins may play a role in the control of cell division and growth regulation. The protein encoded by this gene can bind to and inhibit the dipeptidyl peptidase activity of CD26, and it can induce apoptosis in certain cell types. Deletion mutations in this gene are associated with Simpson-Golabi-Behmel syndrome, also known as Simpson dysmorphia syndrome. Alternative splicing results in multiple transcript variants. [provided by RefSeq, Sep 2009],
Subcellular Location	proteinaceous extracellular matrix,extracellular space,Golgi lumen,plasma membrane,integral component of plasma membrane,anchored component of membrane,lysosomal lumen,anchored component of plasma membrane,extracellular exosome,
BiowMW	-

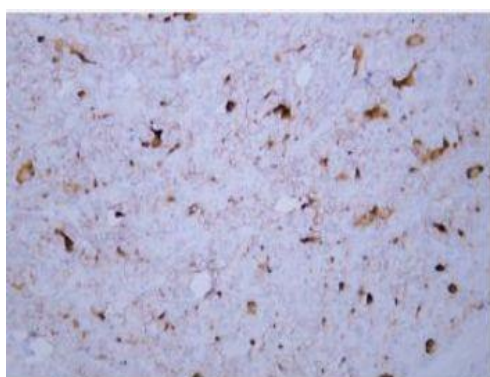
Products Images:



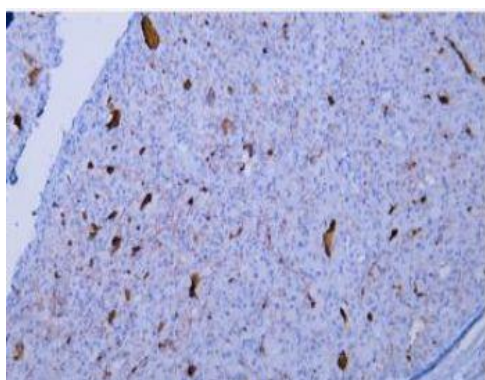
Immunohistochemical analysis of paraffin-embedded human breast Antibody was diluted at 1:200(4° overnight).



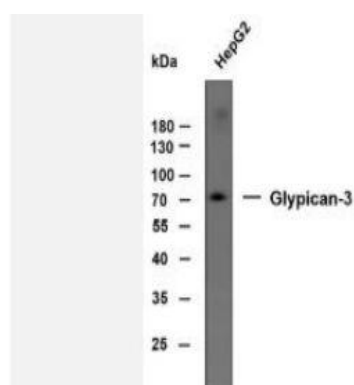
Human hepatocellular carcinoma tissue was stained with Anti-Glypican-3 (ABT068) Antibody



Human hepatocellular carcinoma tissue was stained with Anti-Glypican-3 (ABT068) Antibody



Human hepatocellular carcinoma tissue was stained with Anti-Glypican-3 (ABT068) Antibody



Whole cell lysates of HepG2 were separated by 10% SDS-PAGE, and the membrane was blotted with anti-Glypican-3 antibody. The HRP-conjugated anti-Mouse IgG antibody was used to detect the antibody. Predicted band size: 66kDa
Observed band size: 70kDa