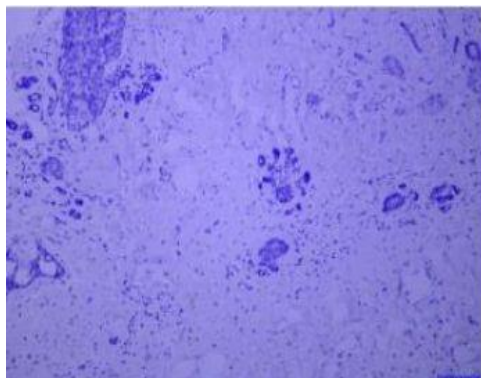


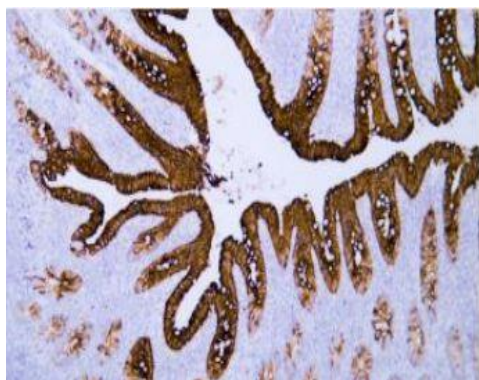
Cytokeratin 20 (CK20) mouse mAb(ABT413)

Catalog No.	IML0825
Reactivity	Human
Applications	IHC-p; IF(paraffin section)
Gene Name	KRT20
Protein Name	Cytokeratin 20 (CK20)
Human Gene Id	54474
Swiss-Prot	P35900
Formulation	Liquid in PBS containing 50% glycerol, 0.5% BSA and 0.137% sodium azide.
Source	Monoclonal, Mouse:IgG1, Kappa
Dilution	IHC-p: 1:100-200 IF: 1:100-500
Purification	The antibody was affinity-purified from mouse ascites by affinity-chromatography using specific immunogen.
Concentration	0.14mg:mL
Storage&Stability	-20°C:1 year
Background	The protein encoded by this gene is a member of the keratin family. The keratins are intermediate filament proteins responsible for the structural integrity of epithelial cells and are subdivided into cytokeratins and hair keratins. The type I cytokeratins consist of acidic proteins which are arranged in pairs of heterotypic keratin chains. This cytokeratin is a major cellular protein of mature enterocytes and goblet cells and is specifically expressed in the gastric and intestinal mucosa. The type I cytokeratin genes are clustered in a region of chromosome 17q12-q21. [provided by RefSeq, Jul 2008],
Subcellular Location	Colon, Colon carcinoma, Appendix
BiowMW	-

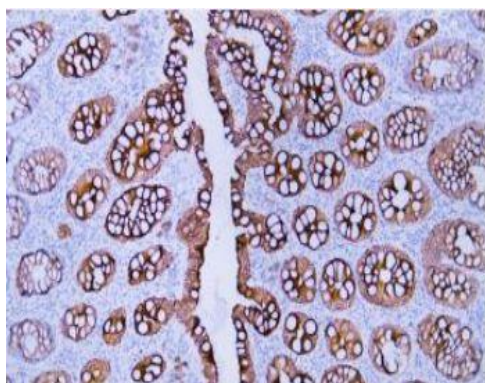
Products Images:



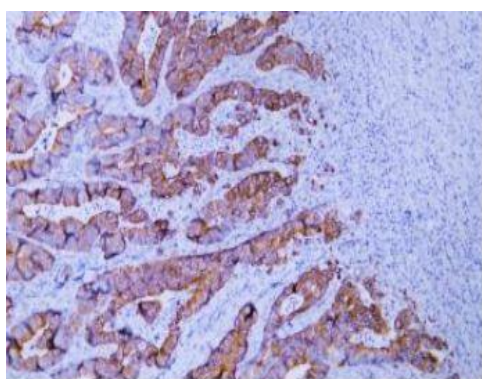
Immunohistochemical analysis of paraffin-embedded human mammary cancer Antibody was diluted at 1:200(4° overnight).



Human appendix tissue was stained with Anti-Cytokeratin 20 (ABT413) Antibody



Human colon carcinoma tissue was stained with Anti-Cytokeratin 20 (ABT413) Antibody



Human rectal carcinoma tissue was stained with Anti-Cytokeratin 20 (ABT413) Antibody