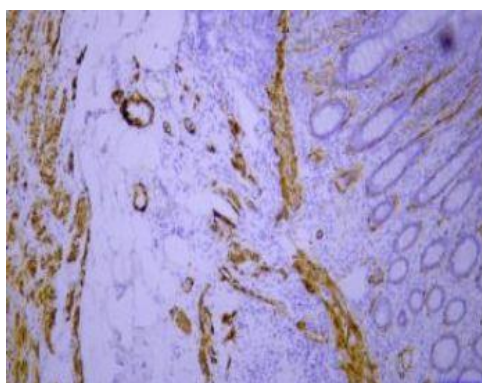


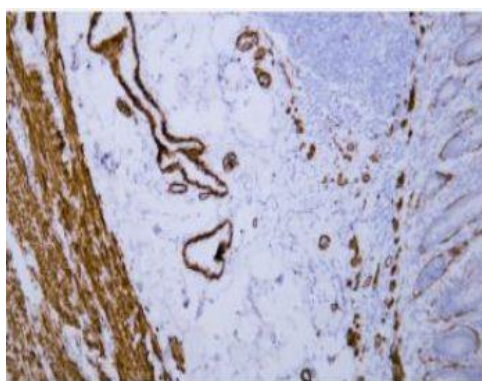
## Myosin Heavy Chain, Smooth Muscle mouse mAb(ABT206)

<b>Catalog No.</b>	IML0822
<b>Reactivity</b>	Human
<b>Applications</b>	IHC-p; IF(paraffin section)
<b>Gene Name</b>	MYH11 KIAA0866
<b>Protein Name</b>	Myosin Heavy Chain, Smooth Muscle
<b>Human Gene Id</b>	4629
<b>Swiss-Prot</b>	P35749
<b>Formulation</b>	Liquid in PBS containing 50% glycerol, 0.5% BSA and 0.134% sodium azide.
<b>Source</b>	Monoclonal, Mouse:IgG1, Kappa
<b>Dilution</b>	IHC-p: 1:100-200 IF: 1:100-500
<b>Purification</b>	The antibody was affinity-purified from mouse ascites by affinity-chromatography using specific immunogen.
<b>Concentration</b>	0.93mg:mL
<b>Storage&amp;Stability</b>	-20°C:1 year
<b>Background</b>	The protein encoded by this gene is a smooth muscle myosin belonging to the myosin heavy chain family. The gene product is a subunit of a hexameric protein that consists of two heavy chain subunits and two pairs of non-identical light chain subunits. It functions as a major contractile protein, converting chemical energy into mechanical energy through the hydrolysis of ATP. The gene encoding a human ortholog of rat NUDE1 is transcribed from the reverse strand of this gene, and its 3' end overlaps with that of the latter. The pericentric inversion of chromosome 16 [inv(16)(p13q22)] produces a chimeric transcript that encodes a protein consisting of the first 165 residues from the N terminus of core-binding factor beta in a fusion with the C-terminal portion of the smooth muscle myosin heavy chain. This chromosomal rearrangement is associated with acute myeloid leukemia of the M4Eo subtype. Alter
<b>Subcellular Location</b>	Colon, Smooth muscle, Breast
<b>BiowMW</b>	-

### Products Images:



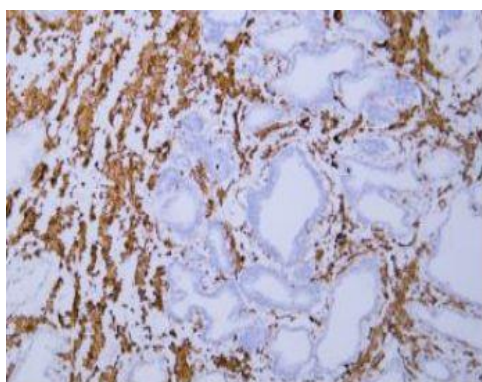
Immunohistochemical analysis of paraffin-embedded human appendix Antibody was diluted at 1:200(4° overnight).



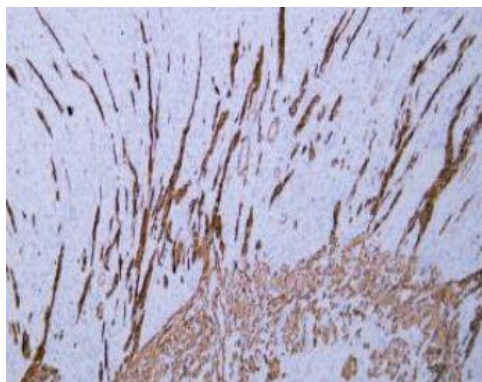
Human appendix tissue was stained with Anti-Myosin Heavy Chain, Smooth Muscle (SMMHC) (ABT206) Antibody



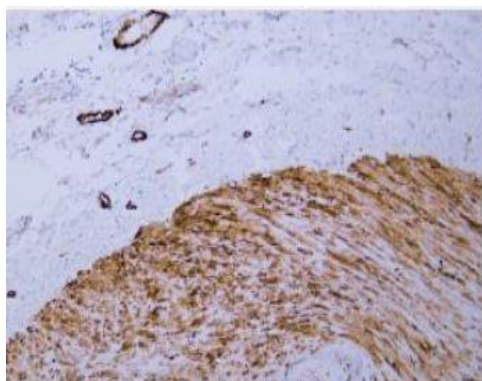
Human tonsil tissue was stained with Anti-Myosin Heavy Chain, Smooth Muscle (SMMHC) (ABT206) Antibody



Human prostate tissue was stained with Anti-Myosin Heavy Chain, Smooth Muscle (SMMHC) (ABT206) Antibody



Human stomach tissue was stained with Anti-Myosin Heavy Chain, Smooth Muscle (SMMHC) (ABT206) Antibody



Human smooth muscle tissue was stained with Anti-Myosin Heavy Chain, Smooth Muscle (SMMHC) (ABT206) Antibody