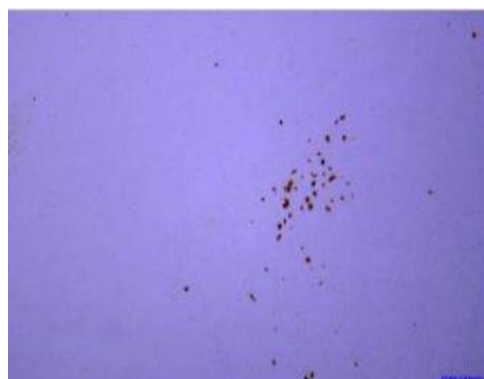


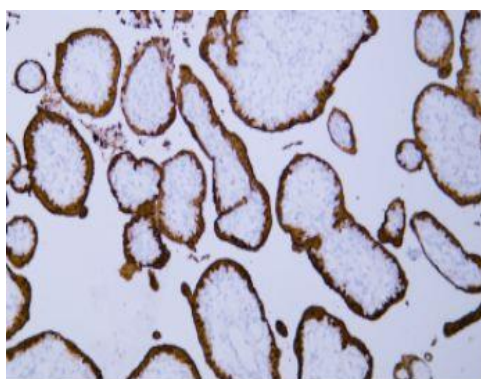
S100P mouse mAb(ABT229)

Catalog No.	IML0812		
Reactivity	Human		
Applications	IHC-p; IF(paraffin section)		
Gene Name	S100P S100E		
Protein Name	S100P		
Human Gene Id	6286		
Swiss-Prot	P25815		
Formulation	Liquid in PBS containing 50% glycerol, 0.5% BSA and 0.124% sodium azide.		
Source	Monoclonal, Mouse:IgG1, Kappa		
Dilution	IHC-p: 1:100-200 IF: 1:100-500		
Purification	The antibody was affinity-purified from mouse ascites by affinity-chromatography using specific immunogen.		
Concentration	0.06mg:mL		
Storage&Stability	-20°C:1 year		
Background	The protein encoded by this gene is a member of the S100 family of proteins containing 2 EF-hand calcium-binding motifs. S100 proteins are localized in the cytoplasm and/or nucleus of a wide range of cells, and involved in the regulation of a number of cellular processes such as cell cycle progression and differentiation. S100 genes include at least 13 members which are located as a cluster on chromosome 1q21; however, this gene is located at 4p16. This protein, in addition to binding Ca2+, also binds Zn2+ and Mg2+. This protein may play a role in the etiology of prostate cancer. [provided by RefSeq, Jul 2008],		
Subcellular Location	nucleus,cytoplasm,cell-cell membrane,extracellular exosome,	adherens	junction,microvillus
BiowMW	-		

Products Images:



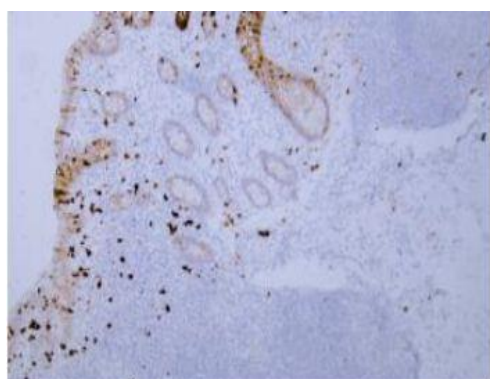
Immunohistochemical analysis of paraffin-embedded human tonsil Antibody was diluted at 1:200(4° overnight).



Human placenta tissue was stained with Anti-S100P (ABT229) Antibody



Human kidney tissue was stained with Anti-S100P (ABT229) Antibody



Human appendix tissue was stained with Anti-S100P (ABT229) Antibody



Human pancreatic cancer tissue was stained with Anti-S100P (ABT229) Antibody