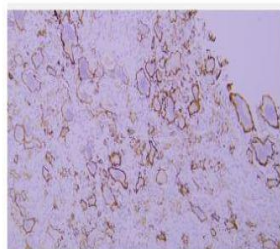


## CD61 rabbit mAb(ABT134R)

<b>Catalog No.</b>	IML0190
<b>Reactivity</b>	Human; Mouse
<b>Applications</b>	IHC-p
<b>Gene Name</b>	ITGB3 GP3A
<b>Protein Name</b>	CD61
<b>Human Gene Id</b>	3662
<b>Swiss-Prot</b>	P05106
<b>Formulation</b>	Liquid in PBS containing 50% glycerol, 0.5% BSA and 0.02% sodium azide.
<b>Source</b>	Monoclonal, Rabbit: IgG
<b>Dilution</b>	IHC-p 1:200
<b>Purification</b>	The antibody was affinity-purified from Cell supernatant by affinity-chromatography using specific immunogen.
<b>Concentration</b>	-
<b>Storage&amp;Stability</b>	-20°C:1 year
<b>Background</b>	The ITGB3 protein product is the integrin beta chain beta 3. Integrins are integral cell-surface proteins composed of an alpha chain and a beta chain. A given chain may combine with multiple partners resulting in different integrins. Integrin beta 3 is found along with the alpha IIb chain in platelets. Integrins are known to participate in cell adhesion as well as cell-surface mediated signalling.
<b>Subcellular Location</b>	nucleus, plasma membrane, integral component of plasma membrane, focal adhesion, integrin complex, cell surface, integral component of membrane, platelet alpha granule membrane, lamellipodium membrane, filopodium membrane, microvillus membrane,
<b>BiowMW</b>	-

### Products Images:



Immunohistochemical analysis of paraffin-embedded human Giant cell tumor of bone. 1, Antibody was incubated at 4° overnight. 2, Citrate buffer of pH6.0 was used for antigen retrieval. 3, Secondary antibody was diluted at 1:200(room temperature, 30min).