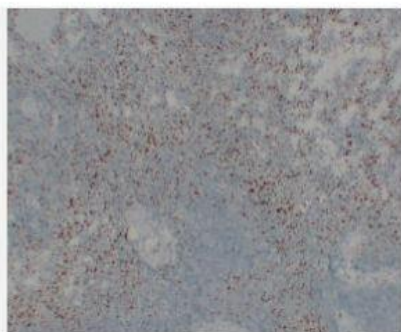


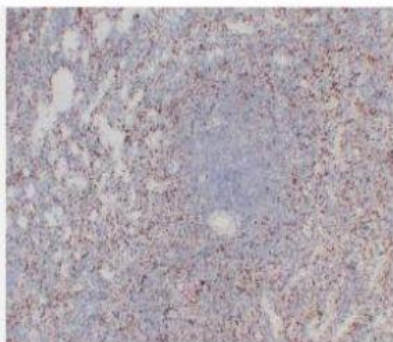
CD61 (ABT-CD61) mouse mAb

Catalog No.	IML0185
Reactivity	Human; Mouse
Applications	IHC-p
Gene Name	ITGB3 GP3A
Protein Name	Integrin beta-3 (Platelet membrane glycoprotein IIIa) (GPIIIa) (CD antigen CD61)
Human Gene Id	3690
Swiss-Prot	P05106
Formulation	Liquid in PBS containing 50% glycerol, 0.5% BSA and 0.02% sodium azide.
Source	Monoclonal, Mouse:IgG3, Kappa
Dilution	IHC-p: 1:100-200
Purification	The antibody was affinity-purified from mouse ascites by affinity-chromatography using specific immunogen.
Concentration	0.705mg:mL
Storage&Stability	-20°C:1 year
Background	The ITGB3 protein product is the integrin beta chain beta 3. Integrins are integral cell-surface proteins composed of an alpha chain and a beta chain. A given chain may combine with multiple partners resulting in different integrins. Integrin beta 3 is found along with the alpha IIb chain in platelets. Integrins are known to participate in cell adhesion as well as cell-surface mediated signalling.
Subcellular Location	Cytoplasmic
BiowMW	-

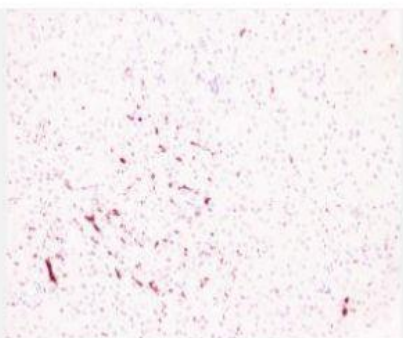
Products Images:



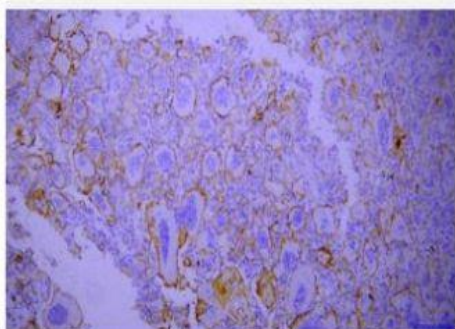
Immunohistochemical analysis of paraffin-embedded Spleen.
1, Antibody was diluted at 1:200(4° overnight). 2, Citric acid ,pH6.0 was used for antigen retrieval. 3,Secondary antibody was diluted at 1:200(room temperature, 30min).



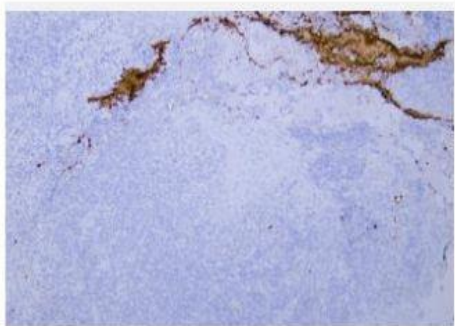
Immunohistochemical analysis of paraffin-embedded Spleen. 1, Antibody was diluted at 1:200(4° overnight). 2, Citric acid ,pH6.0 was used for antigen retrieval. 3,Secondary antibody was diluted at 1:200(room temperature, 30min).



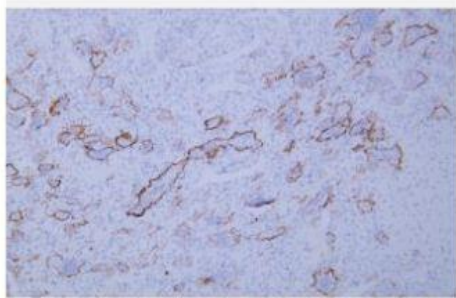
Immunohistochemical analysis of paraffin-embedded Liver. 1, Antibody was diluted at 1:200(4° overnight). 2, Citric acid ,pH6.0 was used for antigen retrieval. 3,Secondary antibody was diluted at 1:200(room temperature, 30min).



Immunohistochemical analysis of paraffin-embedded human Giant cell tumor of bone Antibody was diluted at 1:200(4° overnight).



Human tonsil tissue was stained with Anti-CD61 (ABT-CD61) Antibody



Human giant cell tumor tissue was stained with Anti-CD61
(ABT-CD61) Antibody