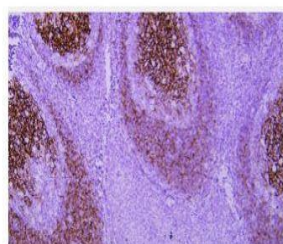


## CD23 rabbit mAb(ABT128R)

<b>Catalog No.</b>	IML0147
<b>Reactivity</b>	Human; Mouse
<b>Applications</b>	IHC-p
<b>Gene Name</b>	FCER2 CD23A CLEC4J FCE2 IGEBF
<b>Protein Name</b>	CD23
<b>Human Gene Id</b>	3662
<b>Swiss-Prot</b>	P06734
<b>Formulation</b>	Liquid in PBS containing 50% glycerol, 0.5% BSA and 0.02% sodium azide.
<b>Source</b>	Monoclonal, Rabbit: IgG
<b>Dilution</b>	IHC-p: 1:100-200
<b>Purification</b>	The antibody was affinity-purified from Cell supernatant by affinity-chromatography using specific immunogen.
<b>Concentration</b>	-
<b>Storage&amp;Stability</b>	-20°C:1 year
<b>Background</b>	The protein encoded by this gene is a B-cell specific antigen, and a low-affinity receptor for IgE. It has essential roles in B cell growth and differentiation, and the regulation of IgE production. This protein also exists as a soluble secreted form, then functioning as a potent mitogenic growth factor. Alternatively spliced transcript variants encoding different isoforms have been described for this gene.
<b>Subcellular Location</b>	plasma membrane, integral component of plasma membrane, external side of plasma membrane, integral component of membrane, extracellular exosome,
<b>BiowMW</b>	-

### Products Images:



Immunohistochemical analysis of paraffin-embedded human Tonsil. 1, Antibody was incubated at 4° overnight. 2, Citrate buffer of pH6.0 was used for antigen retrieval. 3,Secondary antibody was diluted at 1:200(room temperature, 30min).