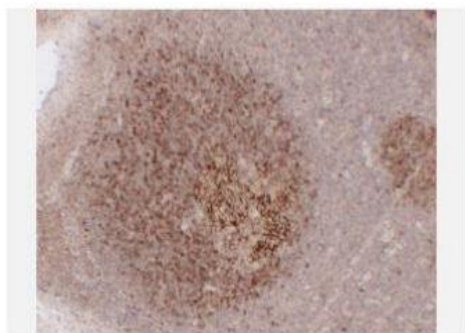


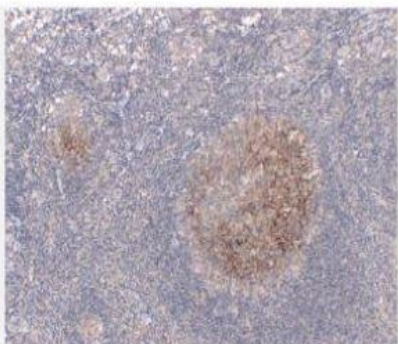
CD23 (ABT-CD23) mouse mAb

Catalog No.	IML0142
Reactivity	Human; Mouse
Applications	IHC-p; IF(paraffin section)
Gene Name	FCER2 CD23A CLEC4J FCE2 IGEBF
Protein Name	Low affinity immunoglobulin epsilon Fc receptor (BLAST-2) (C-type lectin domain family 4 member J) (Fc-epsilon-RII) (Immunoglobulin E-binding factor) (Lymphocyte IgE receptor) (CD antigen CD23) [Cleaved into: Low affinity immunoglobulin epsilon Fc receptor membrane-bound form; Low affinity immunoglobulin epsilon Fc receptor soluble form]
Human Gene Id	2208
Swiss-Prot	P06734
Formulation	Liquid in PBS containing 50% glycerol, 0.5% BSA and 0.02% sodium azide.
Source	Monoclonal, Mouse:IgG1, Kappa
Dilution	IHC-p: 1:100-200
Purification	The antibody was affinity-purified from mouse ascites by affinity-chromatography using specific immunogen.
Concentration	0.24mg:mL
Storage&Stability	-20°C:1 year
Background	The protein encoded by this gene is a B-cell specific antigen, and a low-affinity receptor for IgE. It has essential roles in B cell growth and differentiation, and the regulation of IgE production. This protein also exists as a soluble secreted form, then functioning as a potent mitogenic growth factor. Alternatively spliced transcript variants encoding different isoforms have been described for this gene.
Subcellular Location	Membranous
BiowMW	-

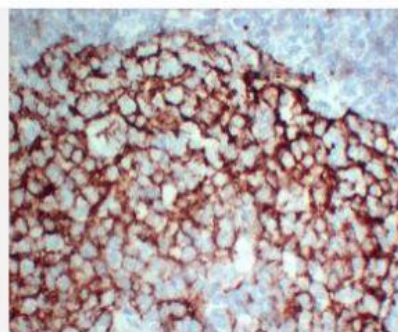
Products Images:



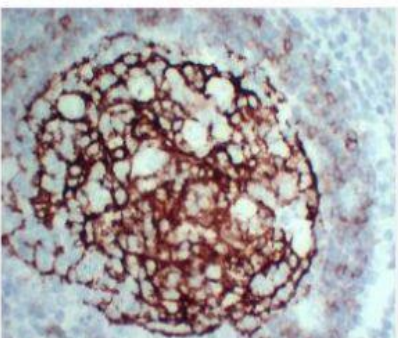
Immunohistochemical analysis of paraffin-embedded Tonsil.
 1, Antibody was diluted at 1:200(4° overnight). 2, Citric acid ,pH6.0 was used for antigen retrieval. 3,Secondary antibody was diluted at 1:200(room temperature, 30min).



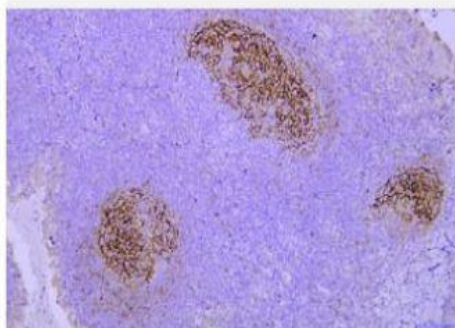
Immunohistochemical analysis of paraffin-embedded Tonsil. 1, Antibody was diluted at 1:200(4° overnight). 2, Citric acid ,pH6.0 was used for antigen retrieval. 3,Secondary antibody was diluted at 1:200(room temperature, 30min).



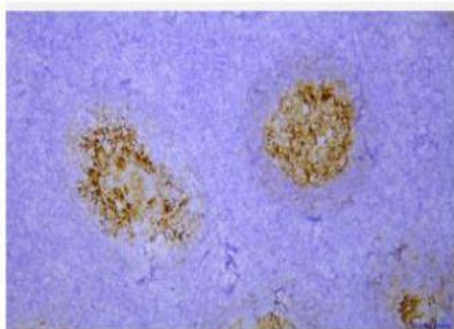
Immunohistochemical analysis of paraffin-embedded Tonsil-high magnification. 1, Antibody was diluted at 1:200(4° overnight). 2, Citrate buffer of pH6.0 was used for antigen retrieval. 3,Secondary antibody was diluted at 1:200(room temperature, 30min).



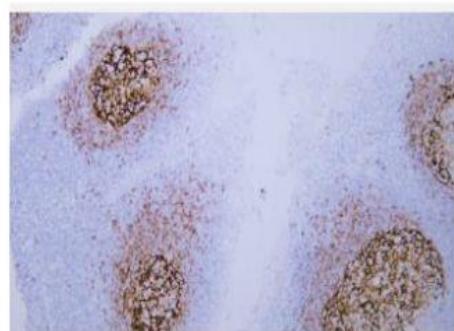
Immunohistochemical analysis of paraffin-embedded Tonsil-high magnification. 1, Antibody was diluted at 1:200(4° overnight). 2, Citrate buffer of pH6.0 was used for antigen retrieval. 3,Secondary antibody was diluted at 1:200(room temperature, 30min).



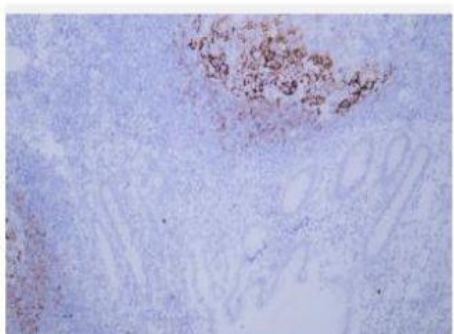
Immunohistochemical analysis of paraffin-embedded human tonsil Antibody was diluted at 1:200(4° overnight).



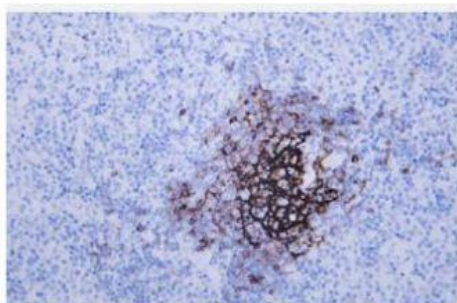
Immunohistochemical analysis of paraffin-embedded human tonsil Antibody was diluted at 1:200(4° overnight).



Human tonsil tissue was stained with anti-CD23(ABT-CD23) antibody.



Human appendix tissue was stained with anti-CD23(ABT-CD23) antibody.



Human diffuse large B-cell lymphoma tissue was stained with Anti-CD23 (ABT-CD23) Antibody