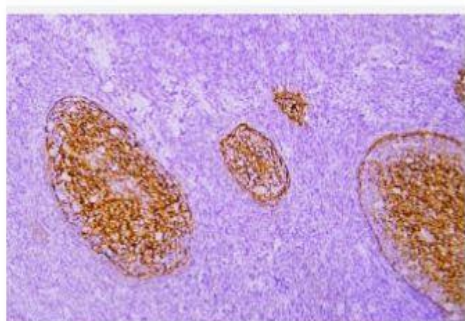


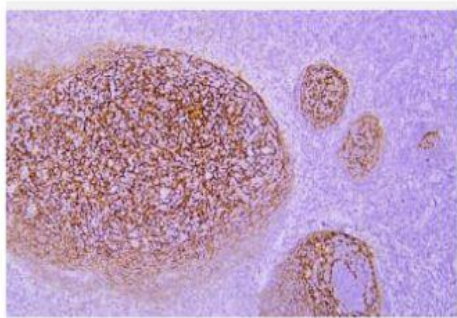
## CD21 rabbit mAb(ABT113R)

<b>Catalog No.</b>	IML0141
<b>Reactivity</b>	Human; Mouse
<b>Applications</b>	IHC-p; IF(paraffin section)
<b>Gene Name</b>	CR2 C3DR
<b>Protein Name</b>	CD21
<b>Human Gene Id</b>	3662
<b>Swiss-Prot</b>	P20023
<b>Formulation</b>	Liquid in PBS containing 50% glycerol, 0.5% BSA and 0.02% sodium azide.
<b>Source</b>	Monoclonal, Rabbit: IgG
<b>Dilution</b>	IHC-p 1:10
<b>Purification</b>	The antibody was affinity-purified from Cell supernatant by affinity-chromatography using specific immunogen.
<b>Concentration</b>	-
<b>Storage&amp;Stability</b>	-20°C:1 year
<b>Background</b>	This gene encodes a membrane protein, which functions as a receptor for Epstein-Barr virus (EBV) binding on B and T lymphocytes. Genetic variations in this gene are associated with susceptibility to systemic lupus erythematosus type 9 (SLEB9). Alternatively spliced transcript variants encoding different isoforms have been found for this gene.
<b>Subcellular Location</b>	plasma membrane, integral component of membrane, receptor complex, extracellular exosome,
<b>BiowMW</b>	-

### Products Images:



Immunohistochemical analysis of paraffin-embedded human Tonsil. 1, Antibody was incubated at 4° overnight. 2, Citrate buffer of pH6.0 was used for antigen retrieval. 3, Secondary antibody was diluted at 1:200(room temperature, 30min).



Immunohistochemical analysis of paraffin-embedded human Tonsil. 1, Antibody was incubated at 4° overnight. 2, Citrate buffer of pH6.0 was used for antigen retrieval. 3, Secondary antibody was diluted at 1:200(room temperature, 30min).