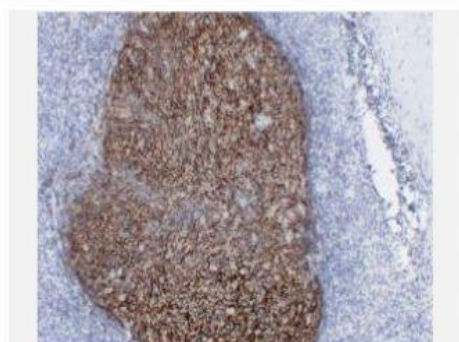


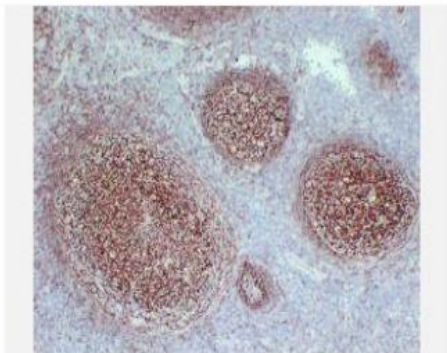
## CD21 (ABT-CD21) mouse mAb

<b>Catalog No.</b>	IML0136
<b>Reactivity</b>	Human; Mouse
<b>Applications</b>	IHC-p
<b>Gene Name</b>	CR2 C3DR
<b>Protein Name</b>	Complement receptor type 2 (Cr2) (Complement C3d receptor) (Epstein-Barr virus receptor) (EBV receptor) (CD antigen CD21)
<b>Human Gene Id</b>	1380
<b>Swiss-Prot</b>	P20023
<b>Formulation</b>	Liquid in PBS containing 50% glycerol, 0.5% BSA and 0.02% sodium azide.
<b>Source</b>	Monoclonal, Mouse:IgG1, Kappa
<b>Dilution</b>	IHC-p: 1:100-200
<b>Purification</b>	The antibody was affinity-purified from mouse ascites by affinity-chromatography using specific immunogen.
<b>Concentration</b>	1.2mg:mL
<b>Storage&amp;Stability</b>	-20°C:1 year
<b>Background</b>	This gene encodes a membrane protein, which functions as a receptor for Epstein-Barr virus (EBV) binding on B and T lymphocytes. Genetic variations in this gene are associated with susceptibility to systemic lupus erythematosus type 9 (SLEB9). Alternatively spliced transcript variants encoding different isoforms have been found for this gene.
<b>Subcellular Location</b>	Membranous
<b>BiowMW</b>	-

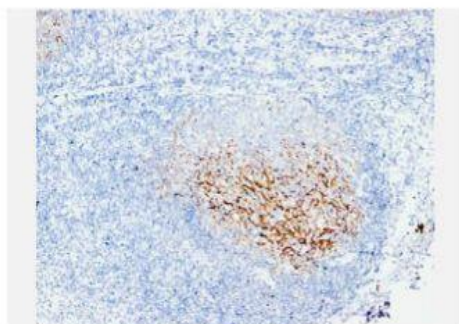
### Products Images:



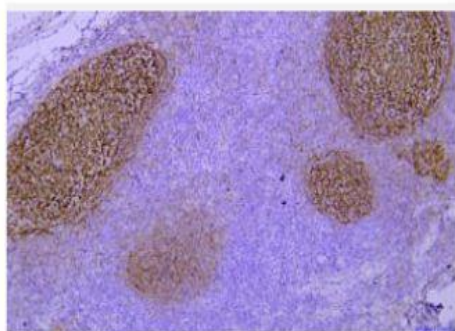
Immunohistochemical analysis of paraffin-embedded Lymphoma. 1, Antibody was diluted at 1:200(4° overnight). 2, Citric acid ,pH6.0 was used for antigen retrieval. 3,Secondary antibody was diluted at 1:200(room temperature, 30min).



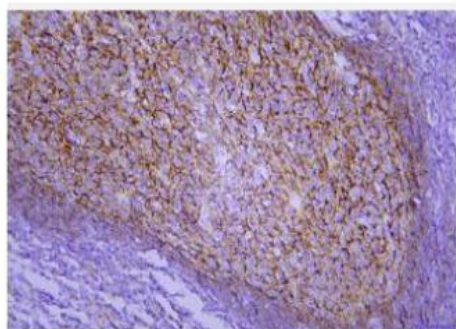
Immunohistochemical analysis of paraffin-embedded Tonsil.  
1, Antibody was diluted at 1:200(4° overnight). 2, Citric acid ,pH6.0 was used for antigen retrieval. 3,Secondary antibody was diluted at 1:200(room temperature, 30min).



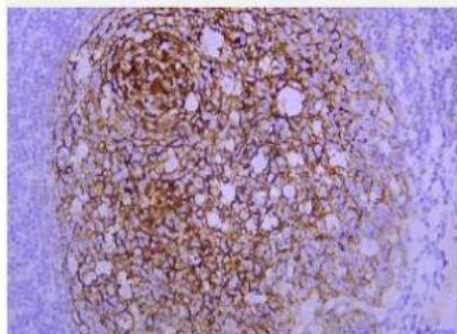
Immunohistochemical analysis of paraffin-embedded Tonsil.  
1, Antibody was diluted at 1:200(4° overnight). 2, Citric acid ,pH6.0 was used for antigen retrieval. 3,Secondary antibody was diluted at 1:200(room temperature, 30min).



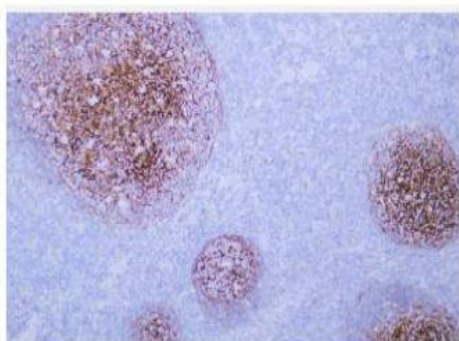
Immunohistochemical analysis of paraffin-embedded human tonsil Antibody was diluted at 1:200(4° overnight).



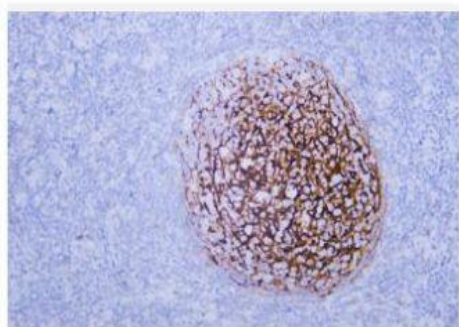
Immunohistochemical analysis of paraffin-embedded human appendix Antibody was diluted at 1:200(4° overnight).



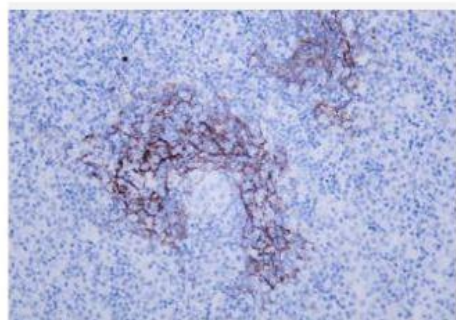
Immunohistochemical analysis of paraffin-embedded human tonsil Antibody was diluted at 1:200(4° overnight).



Human tonsil tissue was stained with anti-CD21(ABT-CD21) antibody.



Human tonsil tissue was stained with anti-CD21(ABT-CD21) antibody.



Human diffuse large B-cell lymphoma tissue was stained with Anti-CD21 (ABT-CD21) Antibody