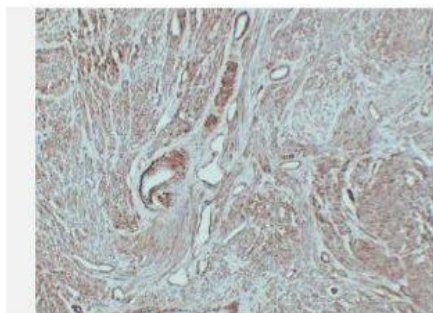


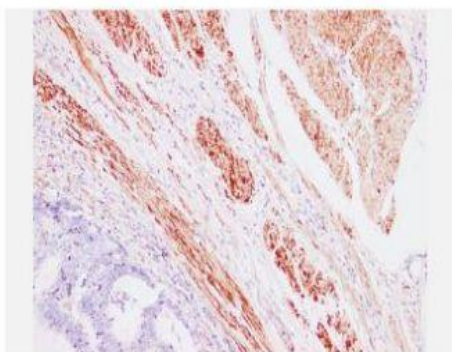
Caldesmon (ABT-CALD) mouse mAb

Catalog No.	IML0103
Reactivity	Human; Mouse
Applications	IHC-p; IF(paraffin section)
Gene Name	CALD1 CAD CDM
Protein Name	Caldesmon (CDM)
Human Gene Id	800
Swiss-Prot	Q05682
Formulation	Liquid in PBS containing 50% glycerol, 0.5% BSA and 0.02% sodium azide.
Source	Monoclonal, Mouse:IgG2b, Kappa
Dilution	IHC-p: 1:100-1:200 IF: 1:50-1:200
Purification	The antibody was affinity-purified from mouse ascites by affinity-chromatography using specific immunogen.
Concentration	1mg:mL
Storage&Stability	-20°C:1 year
Background	This gene encodes a calmodulin- and actin-binding protein that plays an essential role in the regulation of smooth muscle and nonmuscle contraction. The conserved domain of this protein possesses the binding activities to Ca(2+)-calmodulin, actin, tropomyosin, myosin, and phospholipids. This protein is a potent inhibitor of the actin-tropomyosin activated myosin MgATPase, and serves as a mediating factor for Ca(2+)-dependent inhibition of smooth muscle contraction. Alternative splicing of this gene results in multiple transcript variants encoding distinct isoforms.
Subcellular Location	Cytoplasmic
BiowMW	-

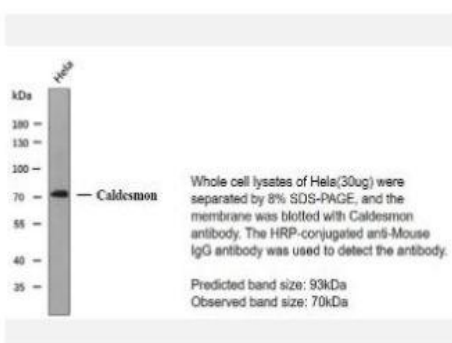
Products Images:



Immunohistochemical analysis of paraffin-embedded Liomyoma. 1, Antibody was diluted at 1:200(4° overnight). 2, Tris-EDTA,pH8.0 was used for antigen retrieval. 3,Secondary antibody was diluted at 1:200(room temperature, 30min).



Immunohistochemical analysis of paraffin-embedded Colon.
1, Antibody was diluted at 1:200(4° overnight). 2, Tris-EDTA,pH8.0 was used for antigen retrieval. 3,Secondary antibody was diluted at 1:200(room temperature, 30min).



Western blot analysis of CaldesmonAntibody at 1:1000 dilution.