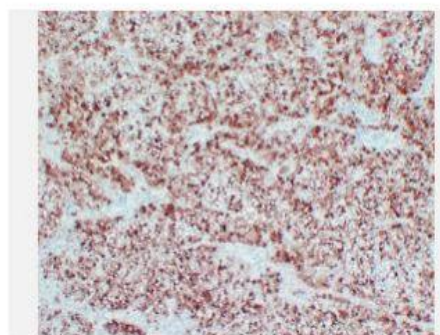


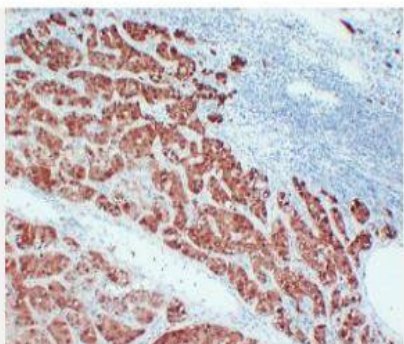
## Arginase-1(PT1766) mouse mAb

<b>Catalog No.</b>	IML0082
<b>Reactivity</b>	Human; Mouse
<b>Applications</b>	IHC-p
<b>Gene Name</b>	ARG1
<b>Protein Name</b>	Arginase-1 (EC 3.5.3.1) (Liver-type arginase) (Type I arginase)
<b>Human Gene Id</b>	383
<b>Swiss-Prot</b>	P05089
<b>Formulation</b>	Liquid in PBS containing 50% glycerol, 0.5% BSA and 0.02% sodium azide.
<b>Source</b>	Monoclonal, Mouse:IgG2a, Kappa
<b>Dilution</b>	IHC-p: 1:100-200
<b>Purification</b>	The antibody was affinity-purified from mouse ascites by affinity-chromatography using specific immunogen.
<b>Concentration</b>	0.87mg:mL
<b>Storage&amp;Stability</b>	-20°C:1 year
<b>Background</b>	Arginase catalyzes the hydrolysis of arginine to ornithine and urea. At least two isoforms of mammalian arginase exist (types I and II) which differ in their tissue distribution, subcellular localization, immunologic crossreactivity and physiologic function. The type I isoform encoded by this gene, is a cytosolic enzyme and expressed predominantly in the liver as a component of the urea cycle. Inherited deficiency of this enzyme results in argininemia, an autosomal recessive disorder characterized by hyperammonemia. Two transcript variants encoding different isoforms have been found for this gene.
<b>Subcellular Location</b>	Cytoplasmic, Nuclear
<b>BiowMW</b>	-

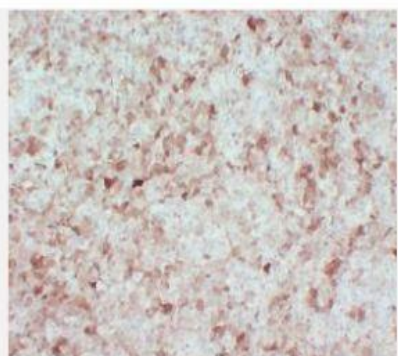
### Products Images:



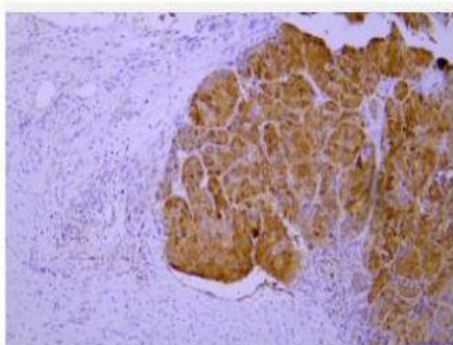
Immunohistochemical analysis of paraffin-embedded human Hepatocellular carcinoma. 1, Arginase-1 Antibody was diluted at 1:200 (4° overnight). 2, EDTA pH 8.0 was used for antigen retrieval



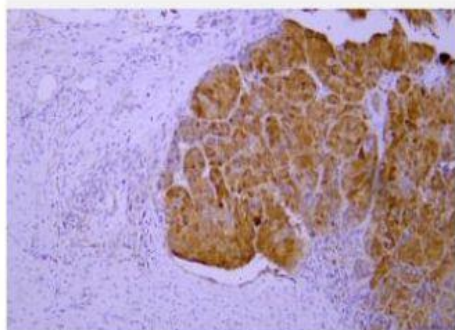
Immunohistochemical analysis of paraffin-embedded human Hepatocellular carcinoma. 1, Arginase-1 Antibody was diluted at 1:200 (4° overnight). 2, EDTA pH 8.0 was used for antigen retrieval



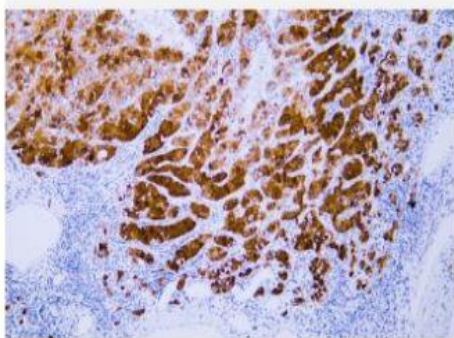
Immunohistochemical analysis of paraffin-embedded human Hepatocellular carcinoma. 1, Arginase-1 Antibody was diluted at 1:200 (4° overnight). 2, EDTA pH 8.0 was used for antigen retrieval



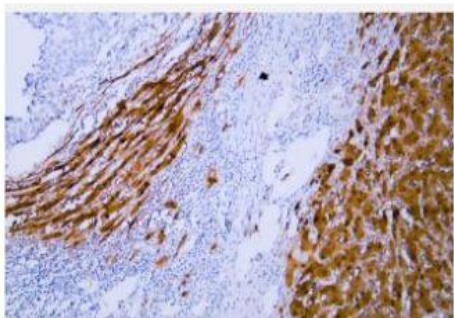
Immunohistochemical analysis of paraffin-embedded human Hepatocellular carcinoma. Antibody was diluted at 1:200 (4° overnight).



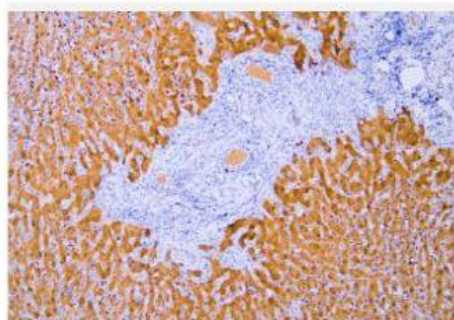
Immunohistochemical analysis of paraffin-embedded human Hepatocellular carcinoma. Antibody was diluted at 1:200 (4° overnight).



Human hepatocellular carcinoma tissue was stained with anti-Arginase-1(ABT007) antibody.



Human hepatocellular carcinoma tissue was stained with anti-Arginase-1(ABT007) antibody.



Human liver tissue was stained with anti-Arginase-1(ABT007) antibody.