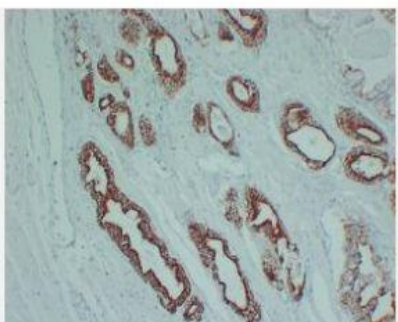


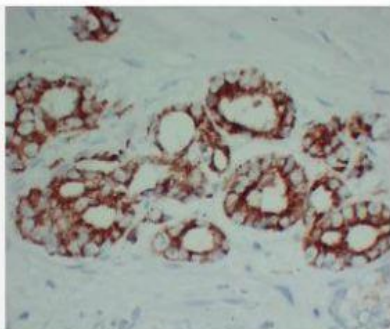
AMACR (ABT-AMACR) mouse mAb

| | |
|------------------------------|--|
| Catalog No. | IML0066 |
| Reactivity | Human; Mouse |
| Applications | IHC-p |
| Gene Name | AMACR |
| Protein Name | AMACR |
| Human Gene Id | 23600 |
| Swiss-Prot | Q9UHK6 |
| Formulation | Liquid in PBS containing 50% glycerol, 0.5% BSA and 0.02% sodium azide. |
| Source | Monoclonal, Mouse:IgG1, Kappa |
| Dilution | IHC-p: 1:100-200 |
| Purification | The antibody was affinity-purified from mouse ascites by affinity-chromatography using specific immunogen. |
| Concentration | 0.52mg:mL |
| Storage&Stability | -20°C:1 year |
| Background | This gene encodes a racemase. The encoded enzyme interconverts pristanoyl-CoA and C27-bile acylCoAs between their (R)- and (S)-stereoisomers. The conversion to the (S)-stereoisomers is necessary for degradation of these substrates by peroxisomal beta-oxidation. Encoded proteins from this locus localize to both mitochondria and peroxisomes. Mutations in this gene may be associated with adult-onset sensorimotor neuropathy, pigmentary retinopathy, and adrenomyeloneuropathy due to defects in bile acid synthesis. Alternatively spliced transcript variants have been described. Read-through transcription also exists between this gene and the upstream neighboring C1QTNF3 (C1q and tumor necrosis factor related protein 3) gene. |
| Subcellular Location | Cytoplasmic |
| BiowMW | - |

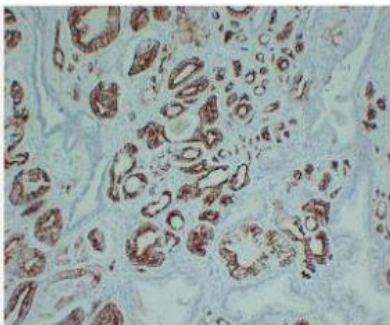
Products Images:



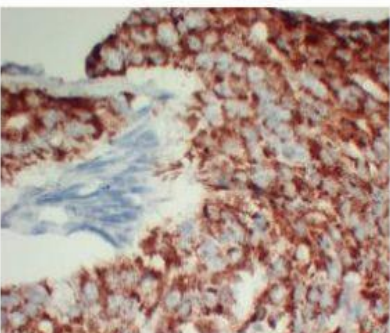
Immunohistochemical analysis of paraffin-embedded Prostatic carcinoma. 1, Antibody was diluted at 1:200(4° overnight). 2, TRIS-EDTA of pH8.0 was used for antigen retrieval. 3,Secondary antibody was diluted at 1:200(room temperature, 30min).



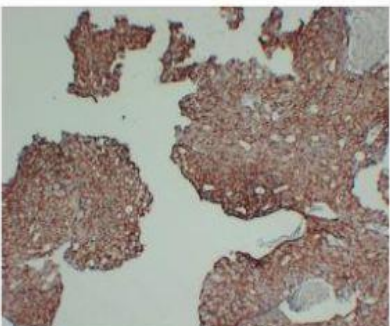
Immunohistochemical analysis of paraffin-embedded Prostatic carcinoma-high magnification. 1, Antibody was diluted at 1:200(4° overnight). 2, TRIS-EDTA of pH8.0 was used for antigen retrieval. 3,Secondary antibody was diluted at 1:200(room temperature, 30min).



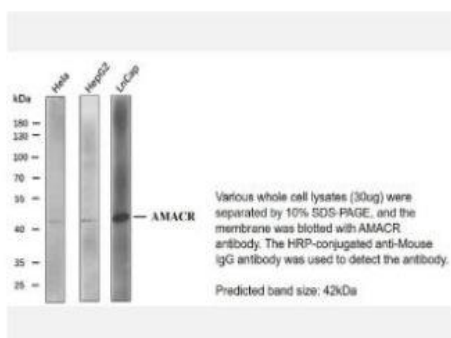
Immunohistochemical analysis of paraffin-embedded Prostatic carcinoma. 1, Antibody was diluted at 1:200(4° overnight). 2, TRIS-EDTA of pH8.0 was used for antigen retrieval. 3,Secondary antibody was diluted at 1:200(room temperature, 30min).



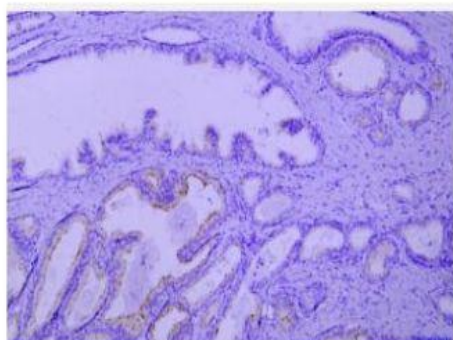
Immunohistochemical analysis of paraffin-embedded Prostatic carcinoma-high magnification. 1, Antibody was diluted at 1:200(4° overnight). 2, TRIS-EDTA of pH8.0 was used for antigen retrieval. 3,Secondary antibody was diluted at 1:200(room temperature, 30min).



Immunohistochemical analysis of paraffin-embedded Prostatic carcinoma. 1, Antibody was diluted at 1:200(4° overnight). 2, TRIS-EDTA of pH8.0 was used for antigen retrieval. 3,Secondary antibody was diluted at 1:200(room temperature, 30min).



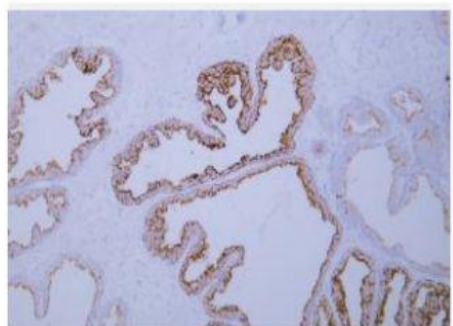
Western blot analysis of AMACR antibody at 1:1000 dilution.



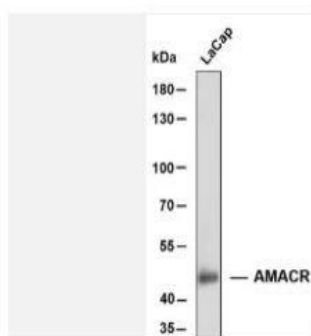
Immunohistochemical analysis of paraffin-embedded human prostate tissue. Antibody was diluted at 1:200 (4° overnight).



Human prostate adenocarcinoma tissue was stained with anti-AR (ABT-AR) antibody.



Human prostate adenocarcinoma tissue was stained with anti-AR (ABT-AR) antibody.



Whole cell lysates of LnCap were separated by 8% SDS-PAGE, and the membrane was blotted with anti-AMACR antibody. The HRP-conjugated anti-Mouse IgG antibody was used to detect the antibody. Predicted band size: 42 kDa