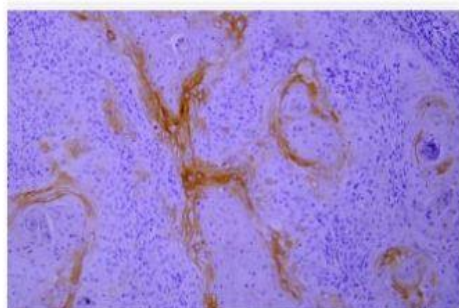


Cytokeratin 10 mouse mAb(PT1859)

Catalog No.	IML0059
Reactivity	Human; Mouse
Applications	IHC-p; IF(paraffin section)
Gene Name	KRT10 KPP
Protein Name	Cytokeratin 10
Human Gene Id	3858
Swiss-Prot	P13645
Formulation	Liquid in PBS containing 50% glycerol, 0.5% BSA and 0.02% sodium azide.
Source	Monoclonal, Mouse:IgG1, Kappa
Dilution	IHC-p: 1:100-1:200 IF: 1:50-1:200
Purification	The antibody was affinity-purified from mouse ascites by affinity-chromatography using specific immunogen.
Concentration	-
Storage&Stability	-20°C:1 year
Background	This gene encodes a member of the type I (acidic) cytokeratin family, which belongs to the superfamily of intermediate filament (IF) proteins. Keratins are heteropolymeric structural proteins which form the intermediate filament. These filaments, along with actin microfilaments and microtubules, compose the cytoskeleton of epithelial cells. Mutations in this gene are associated with epidermolytic hyperkeratosis. This gene is located within a cluster of keratin family members on chromosome 17q21.
Subcellular Location	Cytoplasmic, Membranous
BiowMW	-

Products Images:



Immunohistochemical analysis of paraffin-embedded human Cutaneous Squamous Cell carcinoma. 1, Antibody was diluted at 1:200(4° overnight). 2, Tris-EDTA,pH9.0 was used for antigen retrieval. 3,Secondary antibody was diluted at 1:200(room temperature, 30min).



Immunohistochemical analysis of paraffin-embedded human Cutaneous squamous cell carcinoma Antibody was diluted at 1:200(4° overnight).