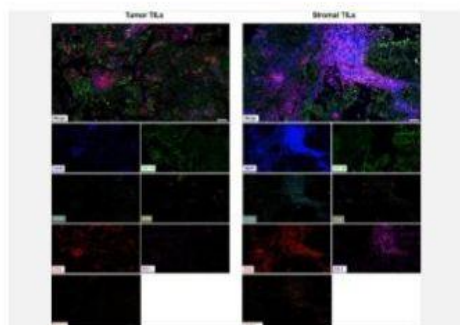


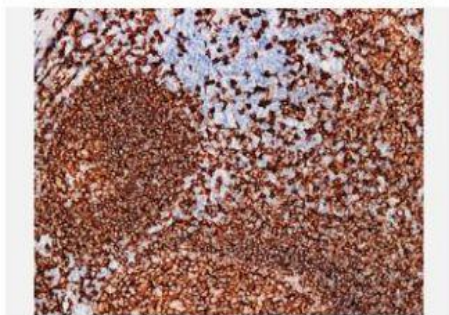
CD20 (PT0029) mouse mAb

Catalog No.	IML0057
Reactivity	Human; Mouse
Applications	IHC-p; IF(paraffin section)
Gene Name	MS4A1 CD20
Protein Name	B-lymphocyte antigen CD20 (B-lymphocyte surface antigen B1) (Bp35) (Leukocyte surface antigen Leu-16) (Membrane-spanning 4-domains subfamily A member 1) (CD antigen CD20)
Human Gene Id	931
Swiss-Prot	P11836
Formulation	Liquid in PBS containing 50% glycerol, 0.5% BSA and 0.02% sodium azide.
Source	Monoclonal, Mouse:IgG1, Kappa
Dilution	IHC-p: 1:100-1:200 IF: 1:50-1:200
Purification	The antibody was affinity-purified from mouse ascites by affinity-chromatography using specific immunogen.
Concentration	0.75mg:mL
Storage&Stability	-20°C:1 year
Background	This gene encodes a member of the membrane-spanning 4A gene family. Members of this nascent protein family are characterized by common structural features and similar intron:exon splice boundaries and display unique expression patterns among hematopoietic cells and nonlymphoid tissues. This gene encodes a B-lymphocyte surface molecule which plays a role in the development and differentiation of B-cells into plasma cells. This family member is localized to 11q12, among a cluster of family members. Alternative splicing of this gene results in two transcript variants which encode the same protein.
Subcellular Location	Membranous
BiowMW	-

Products Images:



Zou, Ming-Xiang, et al. "A four-factor immune risk score signature predicts the clinical outcome of patients with spinal chordoma." *Clinical and translational medicine* 10.1 (2020): 224-237.



Immunohistochemical analysis of paraffin-embedded Tonsil.
1, Antibody was diluted at 1:200(4° overnight). 2, Citrate buffer of pH6.0 was used for antigen retrieval. 3,Secondary antibody was diluted at 1:200(room temperature, 30min).