

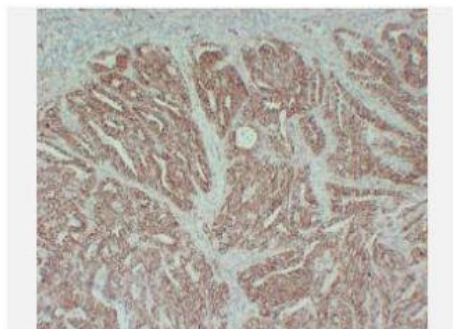
Beta-catenin(PT2250) mouse mAb

Catalog No.	IML0056
Reactivity	Human; Mouse
Applications	IHC-p; IF(paraffin section)
Gene Name	CTNNB1 CTNNB OK:SW-cl.35 PRO2286
Protein Name	Catenin beta-1 (Beta-catenin)
Human Gene Id	1499
Swiss-Prot	P35222
Formulation	Liquid in PBS containing 50% glycerol, 0.5% BSA and 0.02% sodium azide.
Source	Monoclonal, Mouse:IgG2b, Kappa
Dilution	IHC-p: 1:100-1:200 IF: 1:50-1:200
Purification	The antibody was affinity-purified from mouse ascites by affinity-chromatography using specific immunogen.
Concentration	0.98mg:mL
Storage&Stability	-20°C:1 year
Background	The protein encoded by this gene is part of a complex of proteins that constitute adherens junctions (AJs). AJs are necessary for the creation and maintenance of epithelial cell layers by regulating cell growth and adhesion between cells. The encoded protein also anchors the actin cytoskeleton and may be responsible for transmitting the contact inhibition signal that causes cells to stop dividing once the epithelial sheet is complete. Finally, this protein binds to the product of the APC gene, which is mutated in adenomatous polyposis of the colon. Mutations in this gene are a cause of colorectal cancer (CRC), pilomatixoma (PTR), medulloblastoma (MDB), and ovarian cancer. Alternative splicing results in multiple transcript variants.
Subcellular Location	Cytoplasmic
BiowMW	-

Products Images:



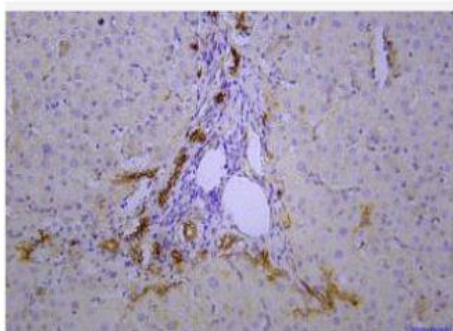
Ma, Zhan, Shuping Lou, and Zheng Jiang. "PHLDA2 regulates EMT and autophagy in colorectal cancer via the PI3K/AKT signaling pathway." *Aging (Albany NY)* 12.9 (2020): 7985.



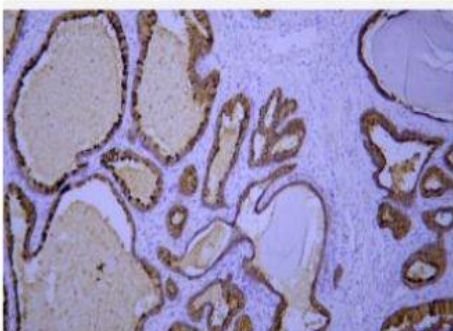
Immunohistochemical analysis of paraffin-embedded human Colon carcinoma. 1, Beta-catenin Antibody was diluted at 1:200 (4° overnight). 2, EDTA pH 9.0 was used for antigen retrieval



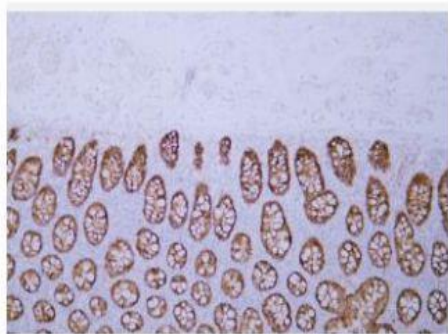
Immunohistochemical analysis of paraffin-embedded human Liver. 1, Beta-catenin Antibody was diluted at 1:200 (4° overnight). 2, EDTA pH 9.0 was used for antigen retrieval



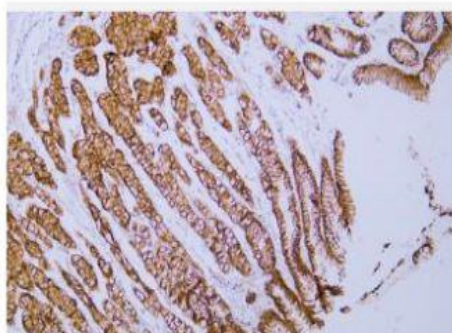
Immunohistochemical analysis of paraffin-embedded human liver. Antibody was diluted at 1:200 (4° overnight).



Immunohistochemical analysis of paraffin-embedded human prostate. Antibody was diluted at 1:200 (4° overnight).



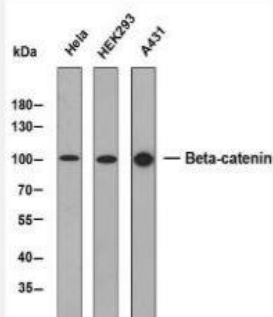
Human colon tissue was stained with anti-Beta-catenin(ABT280) antibody.



Human stomach tissue was stained with anti-Beta-catenin(ABT280) antibody.



Human tonsil tissue was stained with anti-Beta-catenin(ABT280) antibody.



Various whole cell lysates were separated by 8% SDS-PAGE, and the membrane was blotted with anti-Beta-catenin. The HRP-conjugated anti-Mouse IgG antibody was used to detect the antibody. Predicted band size: 94 kDa