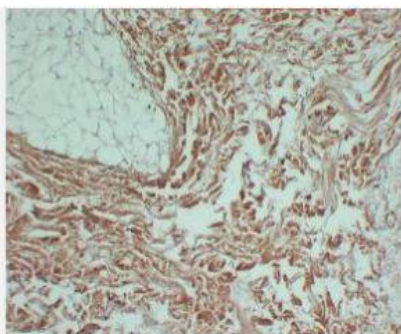


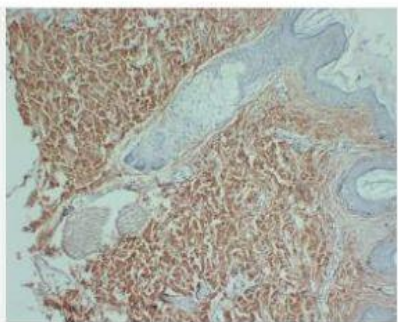
Collagen Type III (PT0118) mouse mAb

Catalog No.	IML0052
Reactivity	Human; Mouse
Applications	IHC-p; IF/ICC
Gene Name	COL3A1
Protein Name	Collagen alpha-1(III) chain
Human Gene Id	1281
Swiss-Prot	P02461
Formulation	Liquid in PBS containing 50% glycerol, 0.5% BSA and 0.02% sodium azide.
Source	Monoclonal, Mouse:IgG1, Kappa
Dilution	Ready to use for IHC-p and IF application may demands at least 1:50-200 dilution
Purification	The antibody was affinity-purified from mouse ascites by affinity-chromatography using specific immunogen.
Concentration	-
Storage&Stability	-20°C:1 year
Background	This gene encodes the pro-alpha1 chains of type III collagen, a fibrillar collagen that is found in extensible connective tissues such as skin, lung, uterus, intestine and the vascular system, frequently in association with type I collagen. Mutations in this gene are associated with Ehlers-Danlos syndrome types IV, and with aortic and arterial aneurysms. Two transcripts, resulting from the use of alternate polyadenylation signals, have been identified for this gene.
Subcellular Location	Cytoplasmic
BiowMW	-

Products Images:



Immunohistochemical analysis of paraffin-embedded Skin. 1, Antibody was diluted at 1:200(4° overnight). 2, Citrate buffer of pH6.0 was used for antigen retrieval. 3,Secondary antibody was diluted at 1:200(room temperature, 30min).



Immunohistochemical analysis of paraffin-embedded Skin. 1, Antibody was diluted at 1:200(4° overnight). 2, Citrate buffer of pH6.0 was used for antigen retrieval. 3,Secondary antibody was diluted at 1:200(room temperature, 30min).