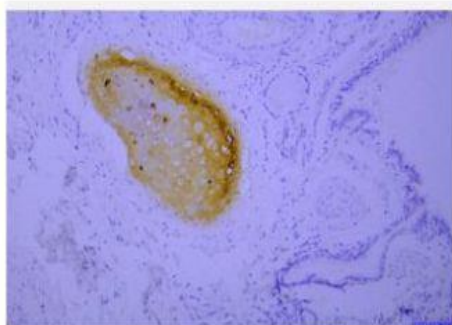


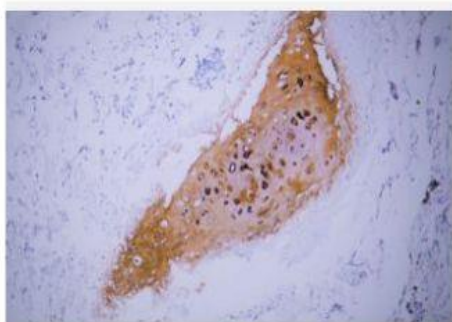
Collagen Type II mouse mAb(ABT501)

Catalog No.	IML0045
Reactivity	Human
Applications	IHC-p; IF(paraffin section)
Gene Name	COL2A1
Protein Name	Collagen Type II
Human Gene Id	1280
Swiss-Prot	P02458
Formulation	Liquid in PBS containing 50% glycerol, 0.5% BSA and 0.30% sodium azide.
Source	Monoclonal, Mouse:IgG2b, Kappa
Dilution	IHC-p: 1:100-200 IF: 1:100-500
Purification	The antibody was affinity-purified from mouse ascites by affinity-chromatography using specific immunogen.
Concentration	0.45mg:mL
Storage&Stability	-20°C:1 year
Background	This gene encodes the alpha-1 chain of type II collagen, a fibrillar collagen found in cartilage and the vitreous humor of the eye. Mutations in this gene are associated with achondrogenesis, chondrodysplasia, early onset familial osteoarthritis, SED congenita, Langer-Saldino achondrogenesis, Kniest dysplasia, Stickler syndrome type I, and spondyloepimetaphyseal dysplasia Strudwick type. In addition, defects in processing chondrocalcin, a calcium binding protein that is the C-propeptide of this collagen molecule, are also associated with chondrodysplasia. There are two transcripts identified for this gene.
Subcellular Location	Cartilage, Chondrosarcoma
BiowMW	-

Products Images:



Immunohistochemical analysis of paraffin-embedded human Cartilaginous lung Antibody was diluted at 1:200(4° overnight).



Human cartilage tissue was stained with Anti-Collagen Type II (ABT501) Antibody