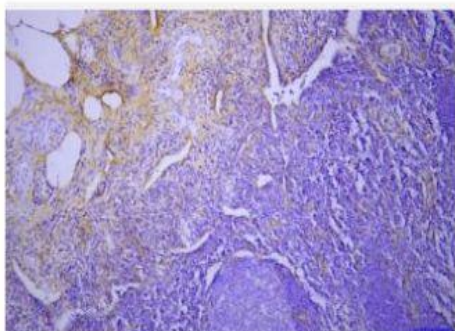


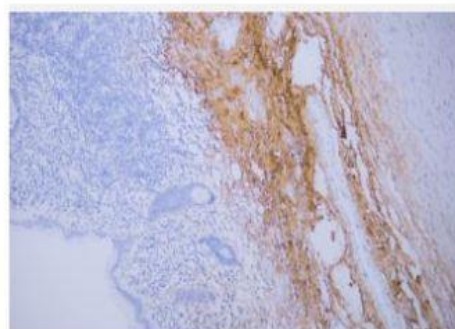
Collagen Type I mouse mAb(ABT162)

Catalog No.	IML0043
Reactivity	Human
Applications	IHC-p; IF(paraffin section)
Gene Name	COL1A2
Protein Name	Collagen Type I
Human Gene Id	1278
Swiss-Prot	P08123
Formulation	Liquid in PBS containing 50% glycerol, 0.5% BSA and 0.61% sodium azide.
Source	Monoclonal, Mouse:IgG2b, Kappa
Dilution	IHC-p: 1:100-200 IF: 1:100-500
Purification	The antibody was affinity-purified from mouse ascites by affinity-chromatography using specific immunogen.
Concentration	1mg:mL
Storage&Stability	-20°C:1 year
Background	This gene encodes the pro-alpha2 chain of type I collagen whose triple helix comprises two alpha1 chains and one alpha2 chain. Type I is a fibril-forming collagen found in most connective tissues and is abundant in bone, cornea, dermis and tendon. Mutations in this gene are associated with osteogenesis imperfecta types I-IV, Ehlers-Danlos syndrome type VIIB, recessive Ehlers-Danlos syndrome Classical type, idiopathic osteoporosis, and atypical Marfan syndrome. Symptoms associated with mutations in this gene, however, tend to be less severe than mutations in the gene for the alpha1 chain of type I collagen (COL1A1) reflecting the different role of alpha2 chains in matrix integrity. Three transcripts, resulting from the use of alternate polyadenylation signals, have been identified for this gene.
Subcellular Location	extracellular region,proteinaceous extracellular matrix,collagen trimer,collagen type I trimer,extracellular space,endoplasmic reticulum lumen,extracellular matrix,extracellular exosome,
BiowMW	-

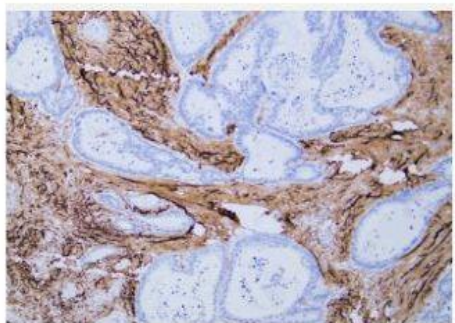
Products Images:



Immunohistochemical analysis of paraffin-embedded human appendix Antibody was diluted at 1:200(4° overnight).



Human appendix tissue was stained with Anti-Collagen Type I (ABT162) Antibody



Human colon carcinoma tissue was stained with Anti-Collagen Type I (ABT162) Antibody