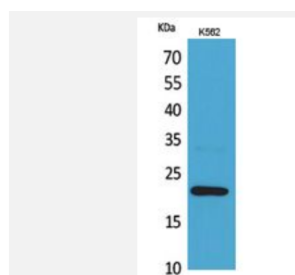


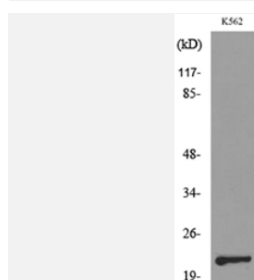
## IL-6 Polyclonal Antibody

<b>Catalog No.</b>	IPB0062
<b>Reactivity</b>	Human
<b>Applications</b>	WB;IHC;IF;ELISA
<b>Alternative Names</b>	<b>Interleukin-6</b>
<b>Immunogen</b>	The antiserum was produced against synthesized peptide derived from the Internal region of human IL6. AA range:131-180
<b>Source</b>	Rabbit
<b>Dilution</b>	WB: 1:500 -1:2000. IHC: 1:100-300 ELISA: 1:20000. IF 1:100-300
<b>Purification</b>	The antibody was affinity-purified from rabbit serum by affinity-chromatography using specific immunogen.
<b>Concentration</b>	1 mg/mL
<b>Storage&amp;Stability</b>	-15°C to -25°C/1 year(Do not lower than -25°C)
<b>Subcellular Location</b>	Secreted .
<b>MW</b>	23KD
<b>Background</b>	<p>This gene encodes a cytokine that functions in inflammation and the maturation of B cells In addition, the encoded protein has been shown to be an endogenous pyrogen capable of inducing fever in people with autoimmune diseases or infections The protein is primarily produced at sites of acute and chronic inflammation, where it is secreted into the serum and induces a transcriptional inflammatory response through interleukin 6 receptor, alpha</p> <p>The functioning of this gene is implicated in a wide variety of inflammation-associated disease states, including susceptibility to diabetes mellitus and systemic juvenile rheumatoid arthritis Alternative splicing results in multiple transcript variants</p>
<b>Swiss-Prot</b>	P05231

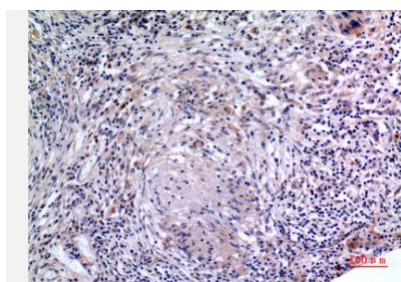
## Products Images:



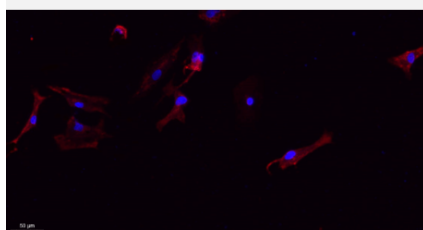
Western Blot analysis of K562 cells using IL-6 Polyclonal Antibody. Antibody was diluted at 1:1000. Secondary antibody(catalog#:RS0002) was diluted at 1:20000



Western blot analysis of lysate from K562 cells, using IL6 Antibody.



Immunohistochemical analysis of paraffin-embedded human-lung, antibody was diluted at 1:100



Immunofluorescence analysis of A549. 1,primary Antibody(red) was diluted at 1:200(4°C overnight). 2, Goat Anti Rabbit IgG (H&L) - Alexa Fluor 594 Secondary antibody was diluted at 1:1000(room temperature, 50min).3, Picture B: DAPI(blue) 10min.