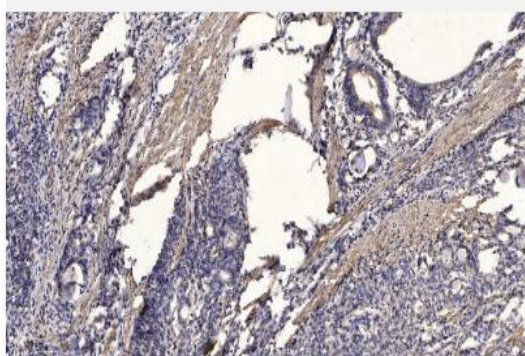


## Rabbit Anti Human IgM(u chain) pAb - HRP

<b>Catalog No.</b>	IHB0066
<b>Reactivity</b>	Human
<b>Applications</b>	WB; IHC-p; IF/ICC; ELISA
<b>Alternative Names</b>	N/A
<b>Formulation</b>	Liquid in PBS containing 50% glycerol and 0.5% BSA.
<b>Source</b>	Rabbit
<b>Dilution</b>	WB: 1:5000-1:20000; IHC: 1:50-1:300; IF: 1:50-1:200; ELISA: 1:10000-1:20000
<b>Purification</b>	The antibody was affinity-purified from Rabbit antiserum by affinitychromatography using epitope-specific immunogen
<b>Concentration</b>	4-5mg/mL
<b>Storage&amp;Stability</b>	Store at 4 °C short term. Aliquot and store at -20 °C long term. Avoid freeze-thaw cycles.
<b>Subcellular Location</b>	-
<b>MW</b>	N/A
<b>Background</b>	Secondary antibodies are available conjugated to enzyme, biotin or fluorophore for use in a variety of antibody-based applications including Western Blot, ImmunoHistoChemistry, ImmunoFluorescence, Flow Cytometry and ELISA. We offer high quality secondary antibodies from goat, rabbit and donkey sources for your each application. Serum adsorbed secondary antibodies are also available and are recommended for use with immunoglobulin-rich samples.
<b>Swiss-Prot</b>	N/A

### Products Images:



Immunohistochemical analysis of paraffin-embedded human Gastric adenocarcinoma. 1, Antibody was diluted at 1:200(4° overnight). 2, Tris-EDTA,pH9.0 was used for antigen retrieval. 3,Secondary antibody was diluted at 1:200(room temperature, 45min).