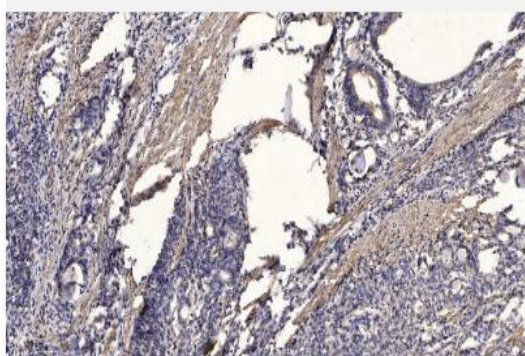


Rabbit Anti Horse IgG(H+L) pAb - HRP

Catalog No.	IHB0062
Reactivity	Horse
Applications	WB; IHC-p; IF/ICC; ELISA
Alternative Names	N/A
Formulation	Liquid in PBS containing 50% glycerol and 0.5% BSA.
Source	Rabbit
Dilution	WB: 1:5000-1:20000; IHC: 1:50-1:300; IF: 1:50-1:200; ELISA: 1:10000-1:20000
Purification	The antibody was affinity-purified from Rabbit antiserum by affinitychromatography using epitope-specific immunogen
Concentration	4-5mg/mL
Storage&Stability	Store at 4 °C short term. Aliquot and store at -20 °C long term. Avoid freeze-thaw cycles.
Subcellular Location	-
MW	N/A
Background	Secondary antibodies are available conjugated to enzyme, biotin or fluorophore for use in a variety of antibody-based applications including Western Blot, ImmunoHistoChemistry, ImmunoFluorescence, Flow Cytometry and ELISA. We offer high quality secondary antibodies from goat, rabbit and donkey sources for your each application. Serum adsorbed secondary antibodies are also available and are recommended for use with immunoglobulin-rich samples.
Swiss-Prot	N/A

Products Images:



Immunohistochemical analysis of paraffin-embedded human Gastric adenocarcinoma. 1, Antibody was diluted at 1:200(4° overnight). 2, Tris-EDTA,pH9.0 was used for antigen retrieval. 3,Secondary antibody was diluted at 1:200(room temperature, 45min).