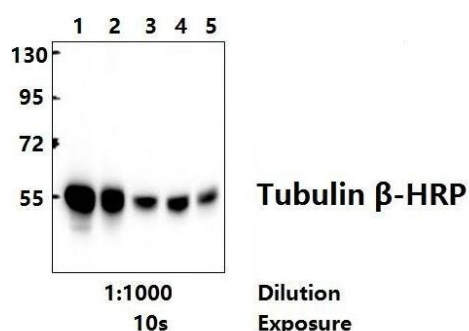


## $\beta$ -Tubulin mAb (5G3), HRP Conjugated

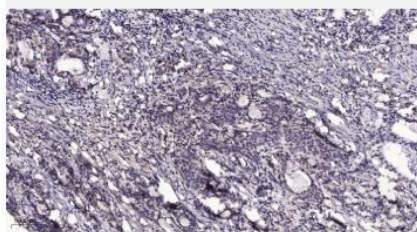
<b>Catalog No.</b>	IDS0196
<b>Reactivity</b>	Human; Mouse; Rat; Mk; Dg; Ch; Hamster; Rabbit; sheep; Insect; Yeast
<b>Applications</b>	WB; IHC-p
<b>Alternative Names</b>	Tubulin beta-3 chain; Tubulin beta-4 chain; Tubulin beta-III; TUBB3; TUBB4
<b>Formulation</b>	Liquid in PBS containing 50% glycerol and 0.5% BSA.
<b>Source</b>	Mouse
<b>Dilution</b>	WB: 1:500-1:2000; IHC: 1:200
<b>Purification</b>	The antibody was affinity-purified from mouse ascites by affinity-chromatography using specific immunogen.
<b>Concentration</b>	1 mg/ml
<b>Storage&amp;Stability</b>	Store at 4 °C short term. Aliquot and store at -20 °C long term. Avoid freeze-thaw cycles.
<b>Subcellular Location</b>	-
<b>MW</b>	~ 49 kDa
<b>Background</b>	This gene encodes a class III member of the beta tubulin protein family. Beta tubulins are one of two core protein families (alpha and beta tubulins) that heterodimerize and assemble to form microtubules. This protein is primarily expressed in neurons and may be involved in neurogenesis and axon guidance and maintenance. Mutations in this gene are the cause of congenital fibrosis of the extraocular muscles type 3. Alternate splicing results in multiple transcript variants. A pseudogene of this gene is found on chromosome 6. [provided by RefSeq, Oct 2010],

Swiss-Prot Q13509

### Products Images:



Western blot (WB) analysis of  $\beta$ -Tubulin mAb (5G3), HRP Conjugated at 1:1000 dilution  
 Lane1:L02 whole cell lysate(20ug)  
 Lane2:NIH-3T3 whole cell lysate(20ug)  
 Lane3:PC12 whole cell lysate(20ug)  
 Lane4:The Kidney tissue lysate of Mouse(20ug)



Immunohistochemical analysis of paraffin-embedded human Gastric adenocarcinoma. 1, Antibody was diluted at 1:200(4° overnight). 2, Tris-EDTA,pH9.0 was used for antigen retrieval. 3,Secondary antibody was diluted at 1:200(room temperature, 45min).