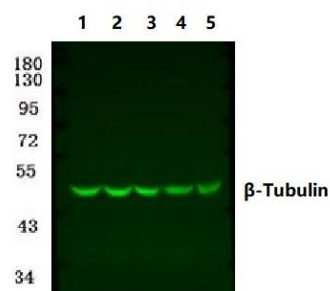


β -Tubulin mAb (5G3), FITC Conjugated

Catalog No.	IDS0195
Reactivity	Human; Mouse; Rat; Mk; Dg; Ch; Hamster; Rabbit; sheep; Insect; Yeast
Applications	WB; IHC-p; IF/ICC
Alternative Names	Tubulin beta-3 chain; Tubulin beta-4 chain; Tubulin beta-III; TUBB3; TUBB4
Formulation	Liquid in PBS containing 50% glycerol, 0.5% BSA and 0.02% sodium azide.
Source	Mouse
Dilution	WB: 1:500-1:2000; IHC: 1:200; IF 1:200
Purification	The antibody was affinity-purified from mouse ascites by affinity-chromatography using specific immunogen.
Concentration	1 mg/ml
Storage&Stability	Store at 4 °C short term. Aliquot and store at -20 °C long term. Avoid freeze-thaw cycles.
Subcellular Location	-
MW	~ 49 kDa
Background	This gene encodes a class III member of the beta tubulin protein family. Beta tubulins are one of two core protein families (alpha and beta tubulins) that heterodimerize and assemble to form microtubules. This protein is primarily expressed in neurons and may be involved in neurogenesis and axon guidance and maintenance. Mutations in this gene are the cause of congenital fibrosis of the extraocular muscles type 3. Alternate splicing results in multiple transcript variants. A pseudogene of this gene is found on chromosome 6.

Swiss-Prot Q13509

Products Images:



Western blot (WB) analysis of β -Tubulin mAb (5G3), FITC Conjugated at 1:1000 dilution

Lane1:The Brain tissue lysate of Rat(10ug)

Lane2:The Brain tissue lysate of Mouse(10ug)

Lane3:PC12 whole cell lysate(10ug)

Lane4:BV2 whole cell lysate(10ug)

Lane5:A549 whole cell lysate(10ug)